

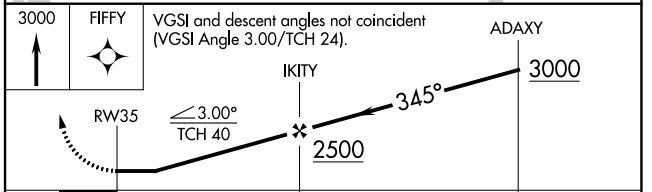
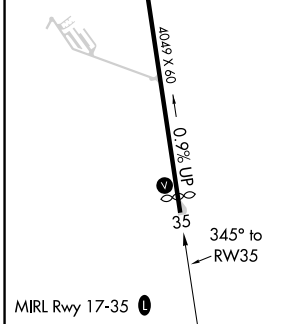
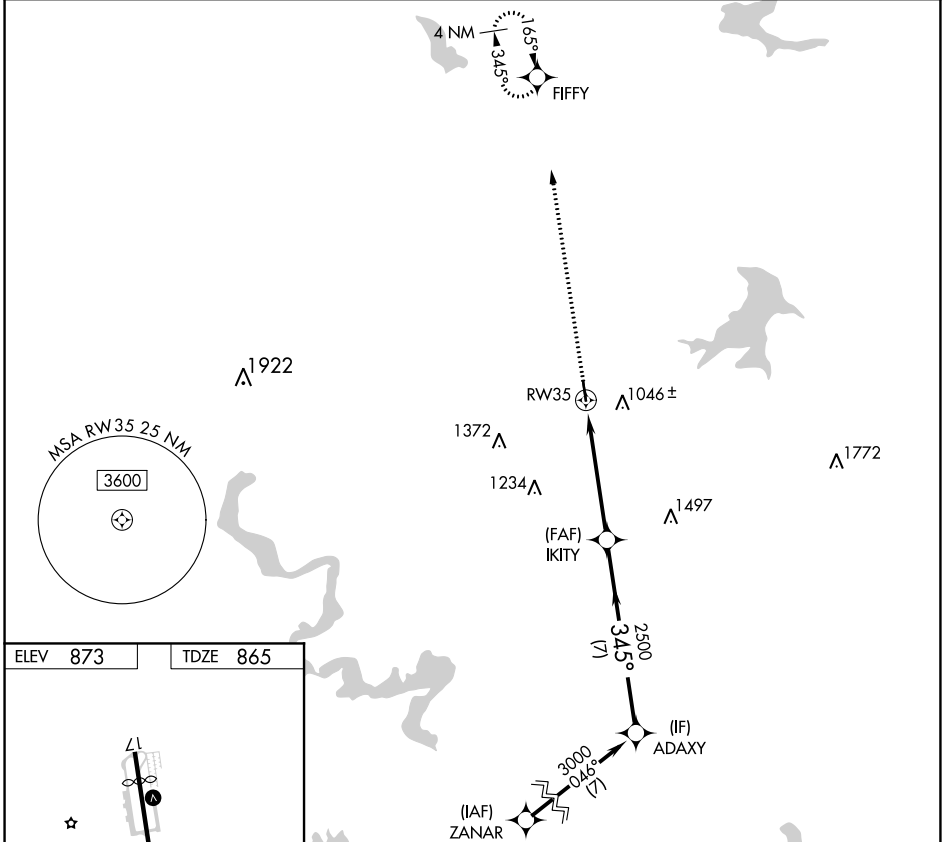
APP CRS	Rwy Idg	<b>3834</b>
<b>345°</b>	TDZE	<b>865</b>
	Apt Elev	<b>873</b>

# RNAV (GPS) RWY 35

BOURLAND FLD (50F)

RNP APCH.	MISSED APPROACH: Climb to 3000 direct FIFFY and hold.
▼ Rwy 35 helicopter visibility reduction below 1 SM NA.	
▲ NA Procedure NA at night.	

CPT AWOS-3 <b>119.525</b>	REGIONAL APP CON <b>135.975 379.9</b>	UNICOM <b>123.0 (CTAF)</b>
------------------------------	------------------------------------------	-------------------------------



CATEGORY	A	B	C	D
LNAV MDA	1560-1	695 (700-1)	1560-2 695 (700-2)	NA
CIRCLING	1580-1	707 (800-1)	1680-2¼ 807 (900-2¼)	NA

SC-2, 16 JUN 2022 to 14 JUL 2022

SC-2, 16 JUN 2022 to 14 JUL 2022