

WAAS CH <b>70733</b> W01A	APP CRS <b>015°</b>	Rwy Idg TDZE <b>880</b> Apt Elev <b>880</b>
---------------------------------	------------------------	---

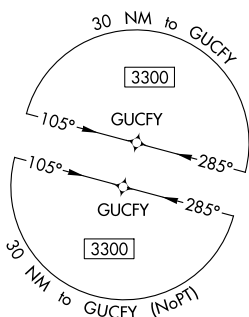
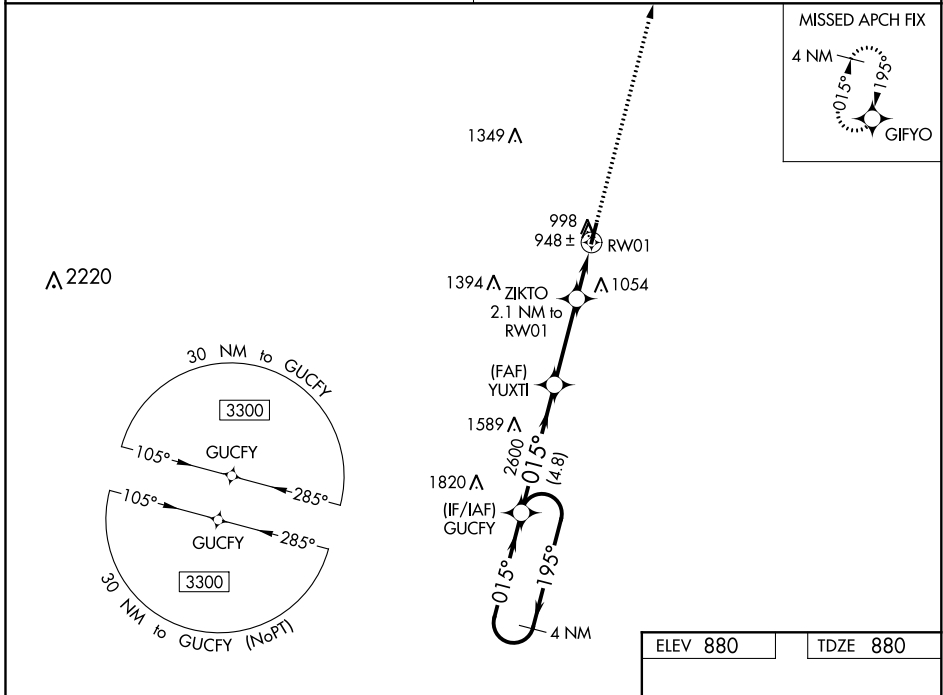
# RNAV (GPS) RWY 1

A PAUL VANCE FREDERICKTOWN RGNL (H88)

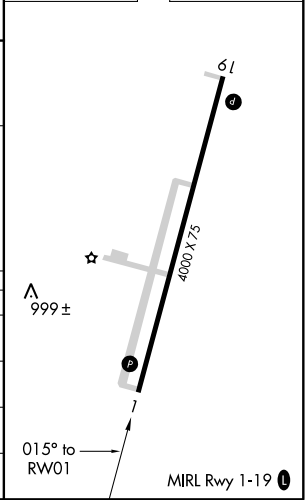
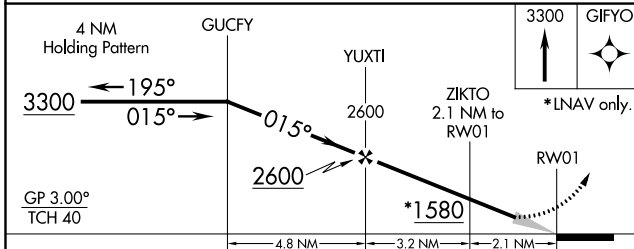
**NA** Baro-VNAV NA. DME/DME RNP-0.3 NA. Use Farmington altimeter setting; when not received, use Sparta altimeter setting and increase all DA 111 feet, all MDA 120 feet and increase LPV all Cats visibility, LNAV/VNAV all Cats visibility and LNAV Cat C visibility 3/8 mile, and Circling Cat C visibility 1/4 mile.

MISSED APPROACH: Climb to 3300 direct GIFYO and hold.

KANSAS CITY CENTER <b>127.475 346.275</b>	UNICOM <b>122.8 (CTAF) 0</b>
--	---------------------------------



ELEV 880	TDZE 880
----------	----------



CATEGORY	A	B	C	D
LPV DA	1166-1	286 (300-1)		NA
LNAV/VNAV DA	1166-1	286 (300-1)		NA
LNAV MDA	1240-1	360 (400-1)		NA
<b>C</b> CIRCLING	1380-1 500 (500-1)	1520-1 640 (700-1)	1640-2 1/4 760 (800-2 1/4)	NA

NC-3, 16 JUN 2022 to 14 JUL 2022

NC-3, 16 JUN 2022 to 14 JUL 2022