

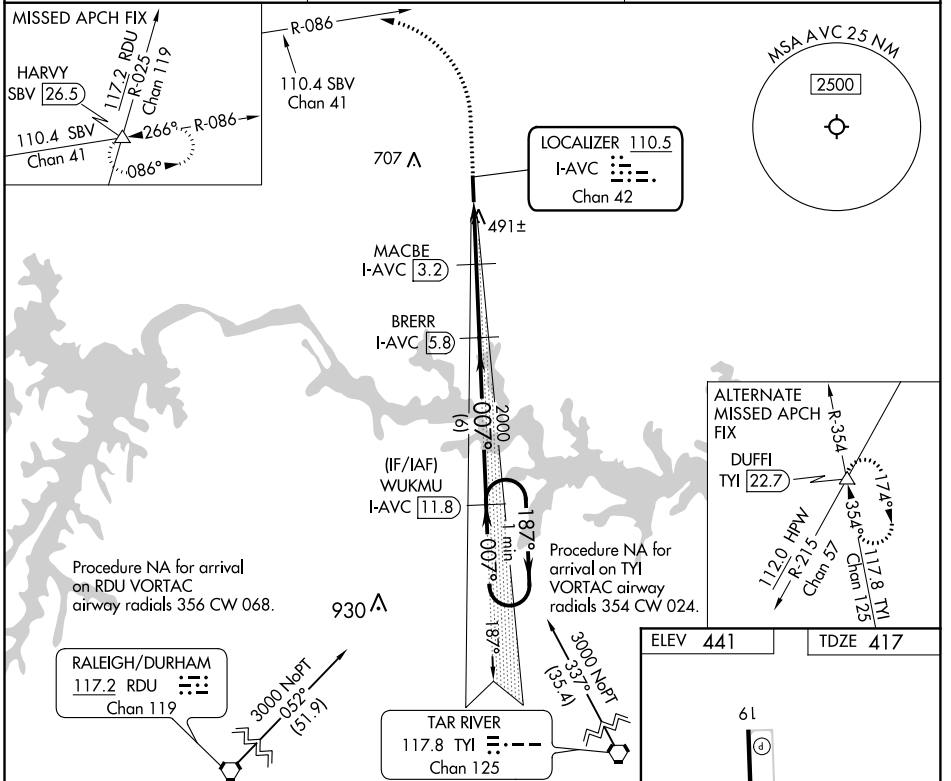
LOC/DME I-AVC <b>110.5</b> Chan 42	APP CRS <b>007°</b>	Rwy Idg TDZE Apt Elev	<b>5002</b> <b>417</b> <b>441</b>
--	------------------------	-----------------------------	---

# LOC RWY 1

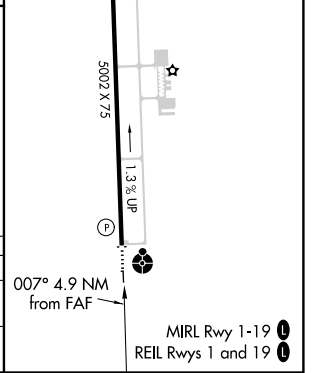
MECKLENBURG-BRUNSWICK RGNL (AVC)

DME required. DME required for procedure entry.	ODALS ⦿ ⋮	MISSED APPROACH: Climb to 900 then climbing left turn to 3000 on heading 310° and SBV VORTAC R-086 to HARVY INT/SBV 26.5 DME and hold.
⚠ Rwy 1 helicopter visibility reduction below 3/4 SM NA.		
⚠ Inop table does not apply.		

AWOS-3 <b>127.525</b>	WASHINGTON CENTER <b>118.75 377.1</b>	UNICOM <b>122.8 (CTAF) 0</b>
--------------------------	--	---------------------------------



900	3000	SBV R-086	HARVY SBV 26.5	BRERR I-AVC 5.8	WUKMU I-AVC 11.8
hdg 310°					
I-AVC 0.9	I-AVC 2	MACBE I-AVC 3.2	TCH 40	3.02°	007°
1.1 NM	1.2 NM	2.6 NM	6 NM		
CATEGORY	A	B	C	D	
S-01		760-1	343 (400-1)		
CIRCLING	860-1 419 (500-1)	900-1 459 (500-1)	1060-1 3/4 619 (700-1 3/4)	1060-2 619 (700-2)	



NE-3, 16 JUN 2022 to 14 JUL 2022

NE-3, 16 JUN 2022 to 14 JUL 2022