

WAAS CH 77921 W14A	APP CRS 140°	Rwy Idg TDZE Apt Elev	4001 1237 1240
--	------------------------	-----------------------------	---

RNAV (GPS) RWY 14

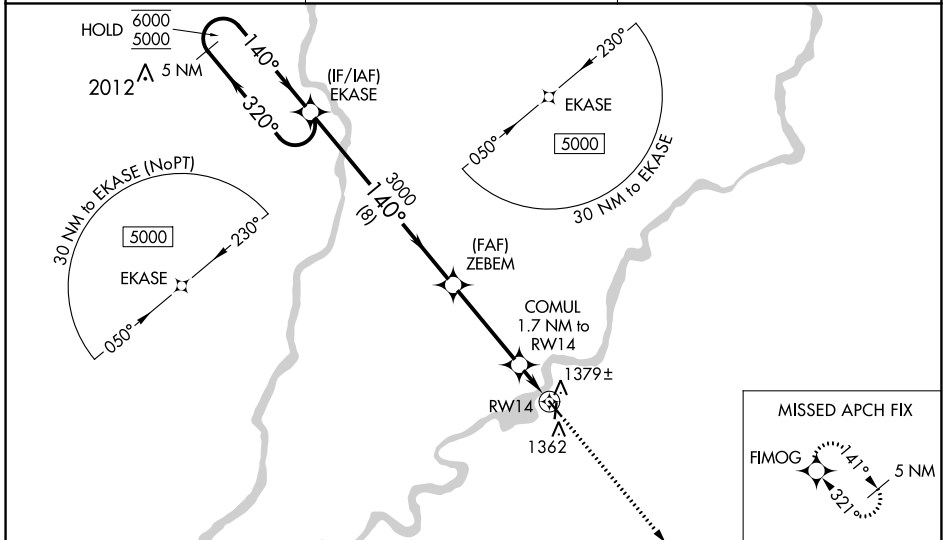
RUSK COUNTY (RCX)

RNP APCH.

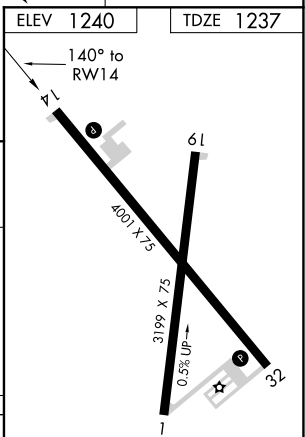
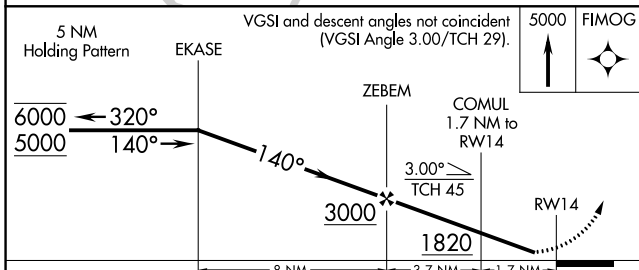
⚠ Rwy 14 helicopter visibility reduction below 1 SM NA. Straight-in Rwy 14 NA at night, Circling Rwy 1, 14, 19 NA at night. When local altimeter setting not received, use Rice Lake altimeter setting and increase all MDAs 100 feet.

MISSED APPROACH: Climb to 5000 direct FIMOG and hold, continue climb-in-hold to 5000.

AWOS-3 118.125	MINNEAPOLIS CENTER 133.65 281.5	UNICOM 122.8 (CTAF) 0
--------------------------	---	---------------------------------



ELEV 1240	TDZE 1237
-----------	-----------



CATEGORY	A	B	C	D
LNAV MDA	1640-1	403 (400-1)		NA
CIRCLING	1680-1 440 (500-1)	1700-1 460 (500-1)		NA

REIL Rwy 14 and 32 0

MIRL Rwy 14-32 and 1-19 0

EC-3, 16 JUN 2022 to 14 JUL 2022

EC-3, 16 JUN 2022 to 14 JUL 2022