

NDB RCX <b>356</b>	APP CRS <b>330°</b>	Rwy Idg TDZE Apt Elev	<b>4001</b> <b>1233</b> <b>1240</b>
-----------------------	------------------------	-----------------------------	---

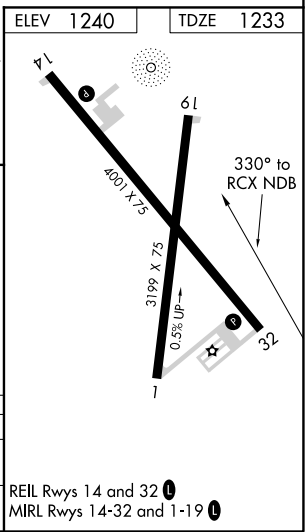
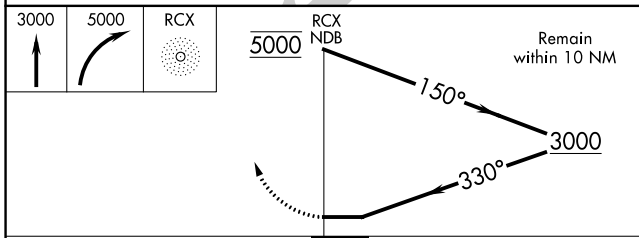
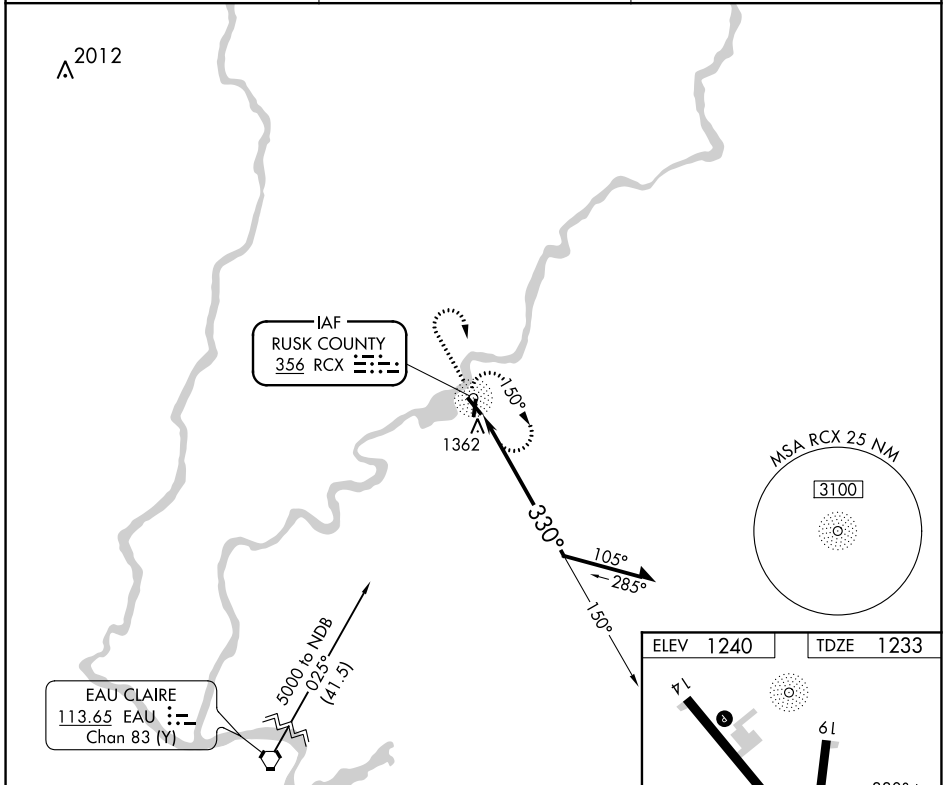
# NDB RWY 32

RUSK COUNTY (RCX)

**⚠** When local altimeter setting not received, use Rice Lake altimeter setting and increase all MDA 100 feet. Procedure NA at night. Rwy 32 helicopter visibility reduction below 1 SM NA.

**MISSING APPROACH:** Climb to 3000 then climbing right turn to 5000 direct RCX NDB and hold, continue climb-in-hold to 5000.

AWOS-3 <b>118.125</b>	MINNEAPOLIS CENTER <b>133.65 281.5</b>	UNICOM <b>122.8 (CTAF) 0</b>
--------------------------	---	---------------------------------



CATEGORY	A	B	C	D
S-32	1820-1	587 (600-1)		NA
CIRCLING	1820-1	580 (600-1)		NA

REIL Rwys 14 and 32 **0**  
MIRL Rwys 14-32 and 1-19 **0**

EC-3, 16 JUN 2022 to 14 JUL 2022

EC-3, 16 JUN 2022 to 14 JUL 2022