


WAAS CH <b>56526</b> <b>W09A</b>	APP CRS <b>091°</b>	Rwy Idg TDZE Apt Elev	<b>5010</b> <b>778</b> <b>778</b>
----------------------------------------	------------------------	-----------------------------	-----------------------------------------

# RNAV (GPS) RWY 9

RED WING RGNL (RGK)

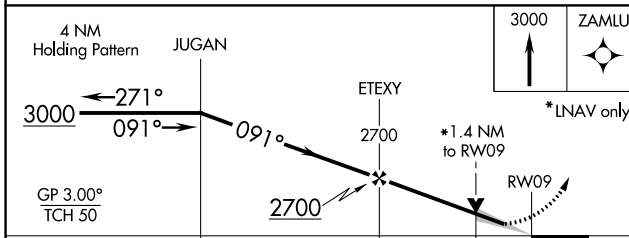
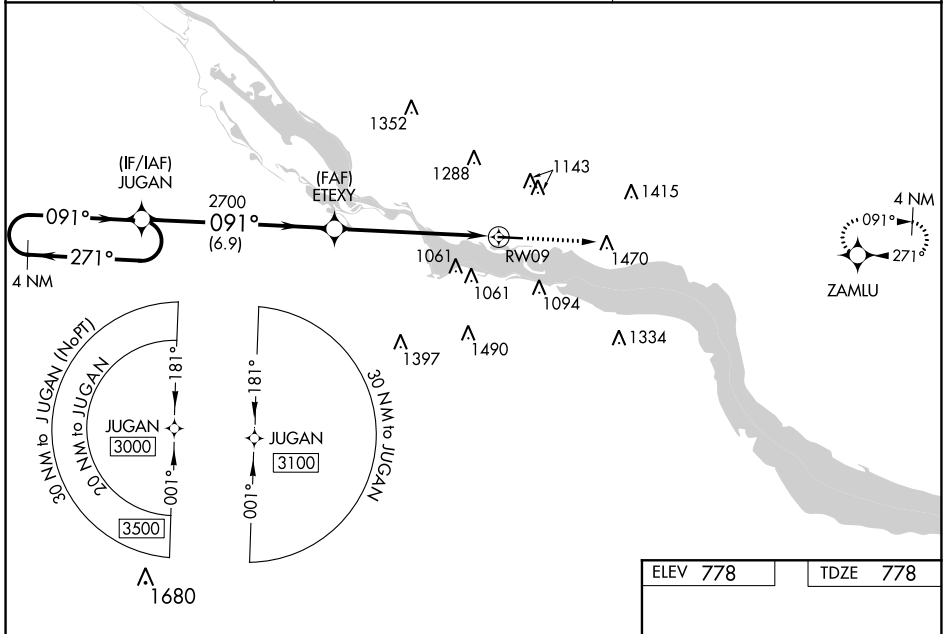
**⚠** Baro-VNAV NA when using South St. Paul altimeter setting. For uncompensated Baro-VNAV systems, LNAV/VNAV NA below -16°C (4°F) or above 38°C (100°F). DME/DME RNP-0.3 NA. VDP NA with South St. Paul altimeter setting. When local altimeter setting not received, use South St. Paul altimeter setting; increase LPV DA to 1050 feet, LNAV/VNAV DA to 1232 feet, and visibility LNAV/VNAV 3/8 SM all Cats; increase all MDA 80 feet and visibility LNAV Cat B/C/D and Circling Cat B/C 1/4 SM. For inop MALSRL, increase LNAV Cat C/D visibility 3/8 mile. For inop MALSRL when using South St. Paul altimeter setting, increase LPV visibility 3/8 mile all Cats, LNAV/VNAV all Cats and LNAV Cat C/D visibility 3/8 mile.

**MALSRL**



**MISSED APPROACH:**  
Climb to 3000 direct ZAMLU and hold.

AWOS-3 <b>119.25</b>	MINNEAPOLIS APP CON <b>121.2 335.65</b>	UNICOM <b>123.05 (CTAF)</b>
-------------------------	--------------------------------------------	--------------------------------



ELEV 778	TDZE 778
----------	----------

3010 X 100

091° to RW09

HIRL Rwy 9-27

CATEGORY	A	B	C	D
LPV DA		978-1/2	200 (200-1/2)	
LNAV/VNAV DA		1160-3/4	382 (400-3/4)	
LNAV MDA	1260-1/2	482 (500-1/2)	1260-1	482 (500-1)
CIRCLING	1480-1 702 (800-1)	1520-1 742 (800-1)	1640-2 1/2 862 (900-2 1/2)	1780-3 1002 (1100-3)

NC-1, 16 JUN 2022 to 14 JUL 2022

NC-1, 16 JUN 2022 to 14 JUL 2022