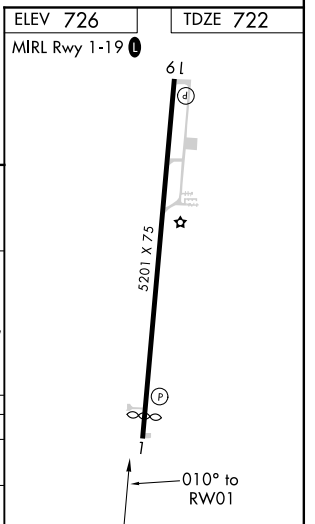
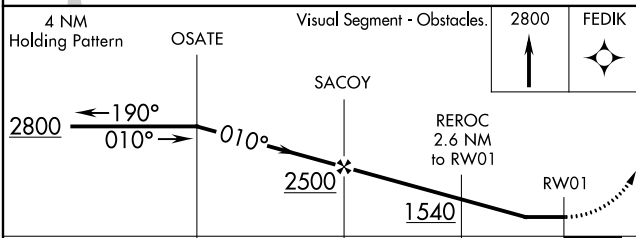
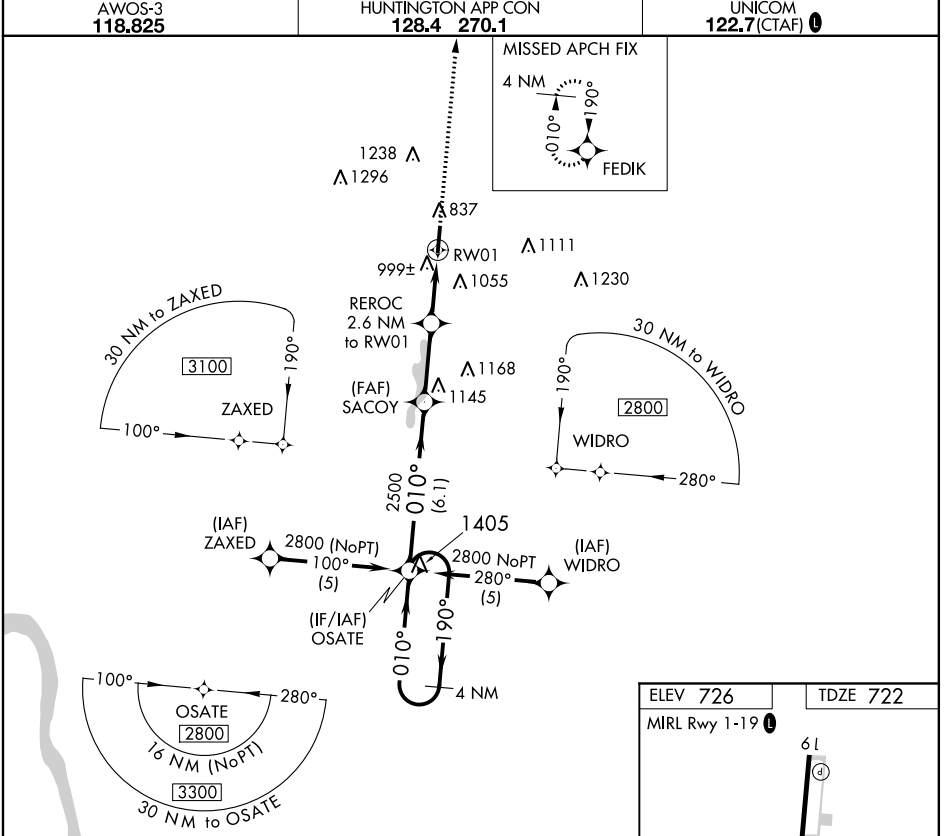


APP CRS	Rwy Idg	4870
010°	TDZE	722
	Apt Elev	726

RNAV (GPS) RWY 1

JAMES A RHODES (I43)

RNP APCH.	<p>When local altimeter setting not received, use Greater Portsmouth altimeter setting and increase all MDA 60 feet, and increase LNAV Cat C/D and Circling Cat B visibility ¼ SM. Rwy 1 helicopter visibility reduction below 1 SM NA. Straight-in Rwy 1 NA at night, Circling Rwy 1 NA at night.</p>	<p>MISSED APPROACH: Climb to 2800 direct FEDIK WP and hold.</p>
AWOS-3 118.825	HUNTINGTON APP CON 128.4 270.1	UNICOM 122.7 (CTAF) 0



CATEGORY	A	B	C	D
LNAV MDA	1300-1	578 (600-1)	1300-1½ 578 (600-1½)	1300-1¾ 578 (600-1¾)
CIRCLING	1340-1 614 (700-1)	1480-1 754 (800-1)	1680-3	954 (1000-3)

EC-2, 16 JUN 2022 to 14 JUL 2022

EC-2, 16 JUN 2022 to 14 JUL 2022