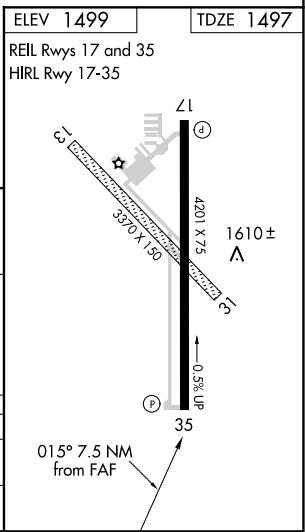
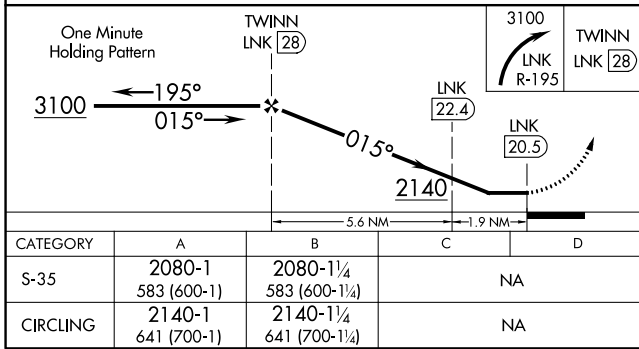
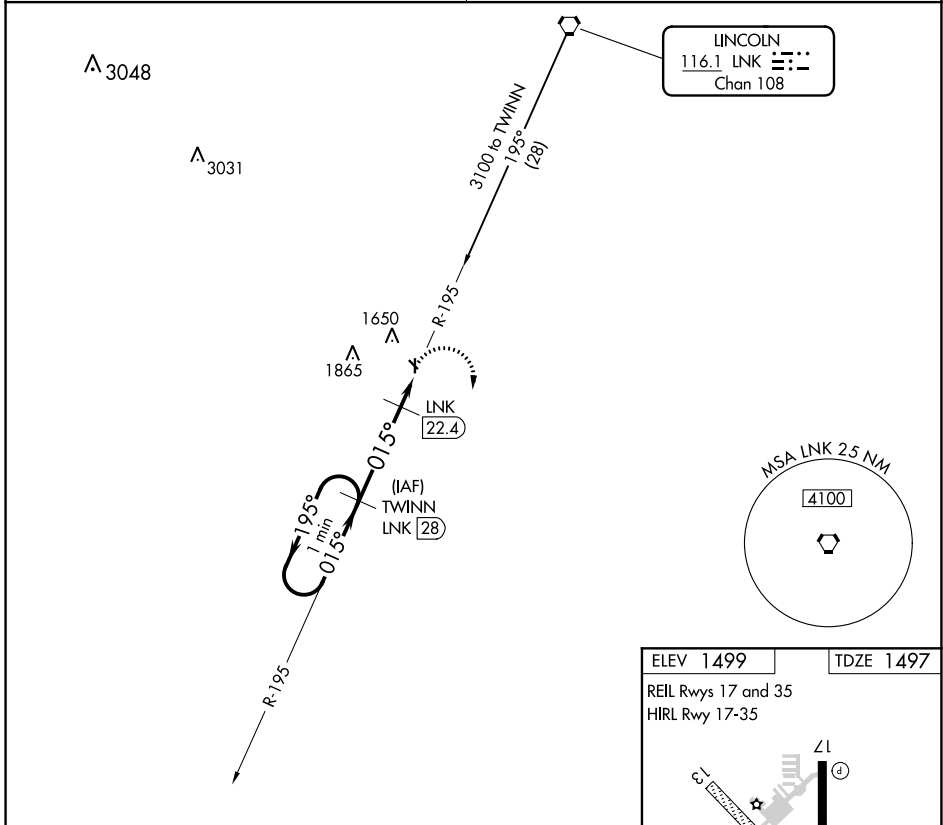


VORTAC LNK <b>116.1</b> Chan 108	APP CRS <b>015°</b>	Rwy Idg TDZE Apt Elev	<b>4201</b> <b>1497</b> <b>1499</b>
--	------------------------	-----------------------------	---

# VOR/DME RWY 35

CRETE MUNI (CEK)

<p><b>NA</b> Use Lincoln altimeter setting; when not received, use Beatrice altimeter setting. Visibility reduction by helicopters NA.</p>	<p>MISSED APPROACH: Climbing right turn to 3100 via LNK R-195 to TWINN/LNK 28 DME and hold.</p>
<p>OMAHA APP CON <b>124.0 270.3</b></p>	<p>UNICOM <b>122.8 (CTAF)</b></p>



NC-2, 16 JUN 2022 to 14 JUL 2022

NC-2, 16 JUN 2022 to 14 JUL 2022