

APP CRS	Rwy Idg	5501
189°	TDZE	1016
	Apt Elev	1016

RNAV (GPS) RWY 19

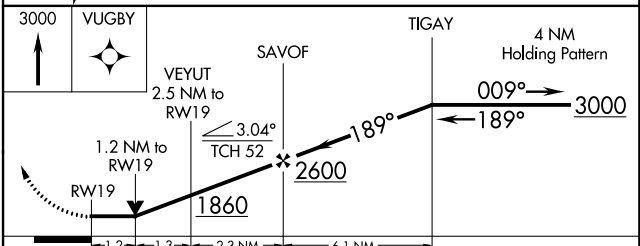
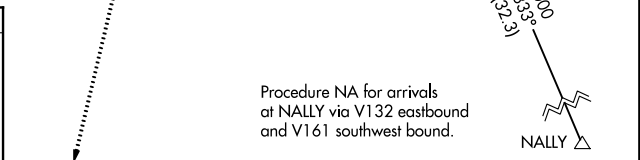
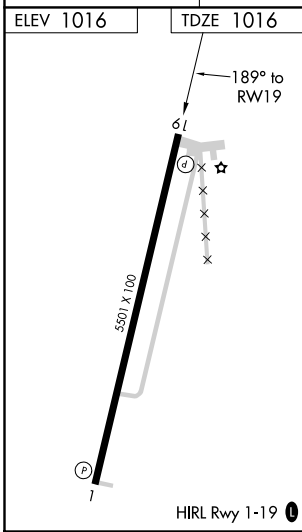
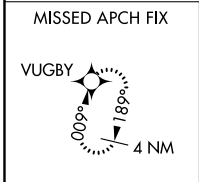
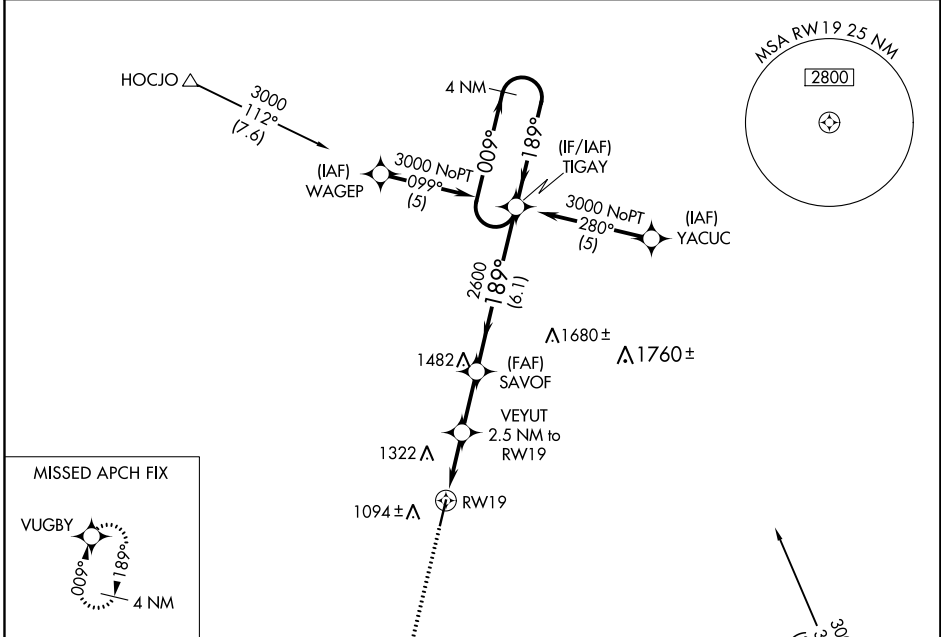
ALLEN COUNTY (K88)

RNP APCH:

▼ Rwy 19 helicopter visibility reduction below 3/4 SM NA. When local altimeter setting not received, use Chanute altimeter setting and increase all MDAs 40 feet and visibility Circling Cat C 1/4 SM. VDP NA when using Chanute altimeter setting.

MISSED APPROACH:
Climb to 3000 direct
VUGBY and hold.

AWOS-3 128.325	KANSAS CITY CENTER 127.725 270.25	UNICOM 122.8 (CTAF) 0
--------------------------	---	---------------------------------



CATEGORY	A	B	C	D
LNAV MDA	1460-1	444 (500-1)	1460-1 3/8 444 (500-1 3/8)	NA
CIRCLING	1520-1	504 (600-1)	1660-1 3/4 644 (700-1 3/4)	NA

NC-2, 16 JUN 2022 to 14 JUL 2022

NC-2, 16 JUN 2022 to 14 JUL 2022