

APP CRS **279°**  
 Rwy Idg **3753**  
 TDZE **1063**  
 Apt Elev **1070**

**RNAV (GPS) RWY 28**  
 YOUNGSTOWN ELSER METRO (4G4)

RNP APCH - GPS.

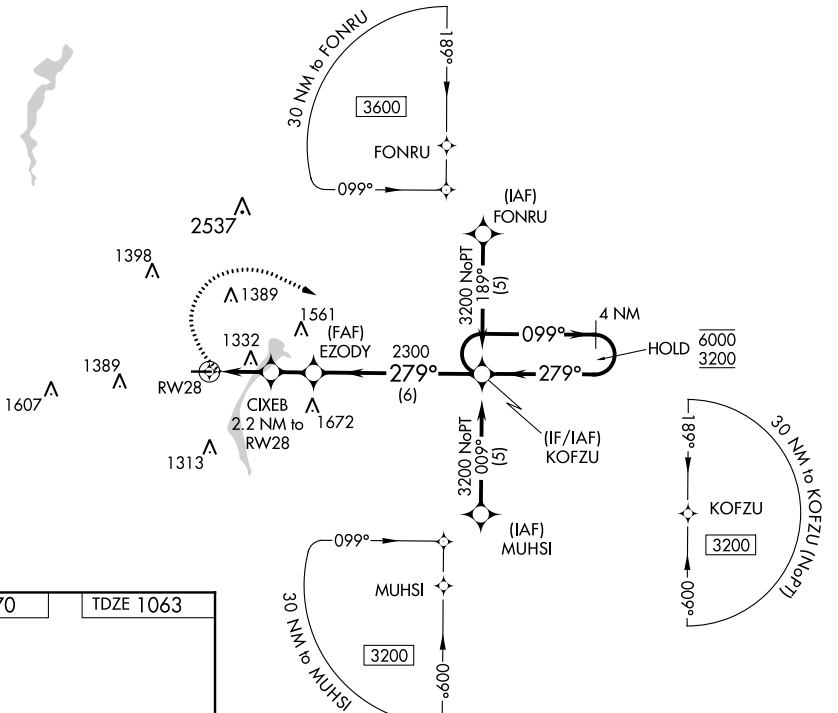
Procedure NA at night. Rwy 28 helicopter visibility reduction below 1 SM NA. Obtain local altimeter setting on CTAF; when not received, use New Castle altimeter setting and increase all MDA 40 feet.

MISSED APPROACH: Climbing right turn to 3200 direct KOFZU and hold.

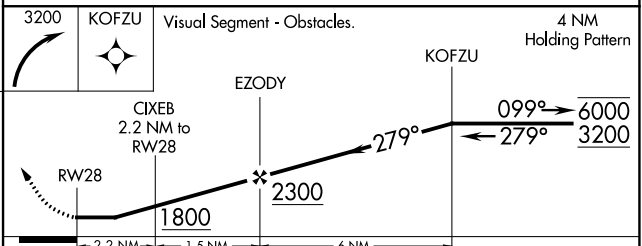
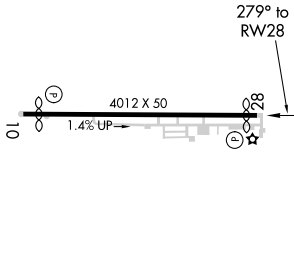
CLEVELAND APP CON\*  
**125.5 371.875**

CLNC DEL  
**119.25**

UNICOM  
**123.05 (CTAF)**



ELEV 1070 | TDZE 1063



CATEGORY	A	B	C	D
LNAV MDA	1600-1	537 (600-1)	NA	
CIRCLING	1660-1	590 (600-1)	NA	

MIRL Rwy 10-28  
 REIL Rwy 10 and 28  
 YOUNGSTOWN, OHIO  
 Amdt 1 24MAR22

40°58'N-80°41'W

YOUNGSTOWN ELSER METRO (4G4)  
**RNAV (GPS) RWY 28**

EC-2, 16 JUN 2022 to 14 JUL 2022

EC-2, 16 JUN 2022 to 14 JUL 2022