

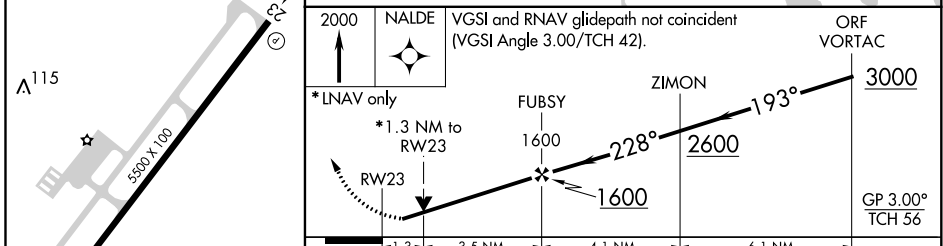
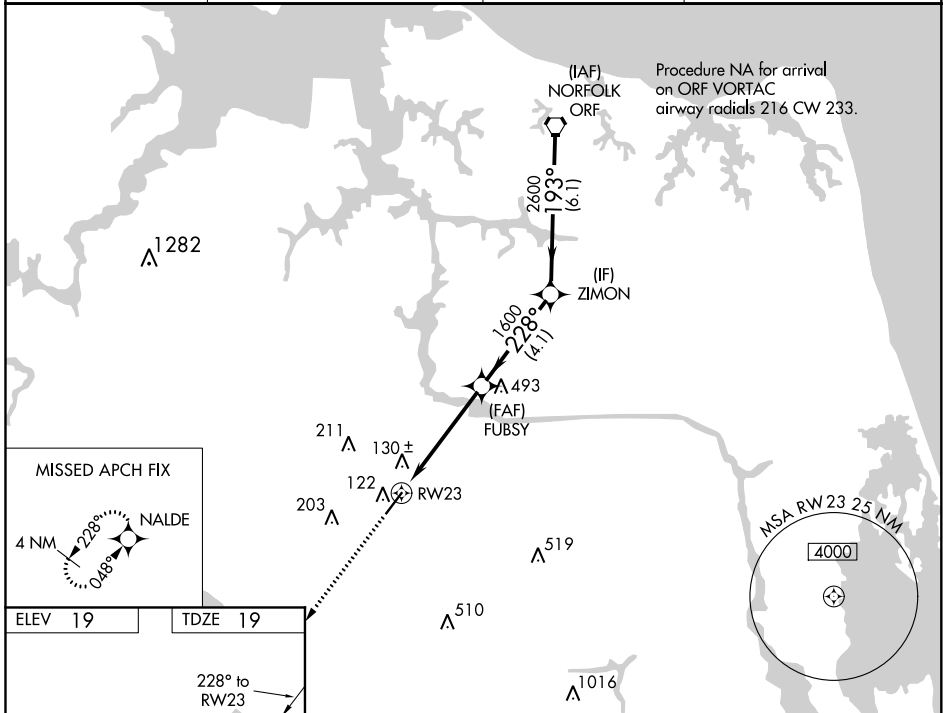
WAAS CH <b>65922</b> <b>W23A</b>	APP CRS <b>228°</b>	Rwly Idg TDZE Apt Elev	<b>5500</b> <b>19</b> <b>19</b>
--	------------------------	------------------------------	---------------------------------------

# RNAV (GPS) RWY 23

CHESAPEAKE RGNL (CPK)

RNP APCH.	<p><b>▼</b> Rwy 23 helicopter visibility reduction below 1 SM NA. When local altimeter setting not received, use Norfolk Intl altimeter setting and increase all DA 36 feet and all MDA 40 feet. Baro-VNAV and VDP NA with Norfolk Intl altimeter setting. For uncompensated Baro-VNAV systems, LNAV/VNAV NA below -1.5°C or above 43°C.</p>	<p>MISSED APPROACH: Climb to 2000 direct NALDE and hold.</p>

AWOS-3 <b>123.675</b>	NORFOLK APP CON <b>118.9 353.7</b>	GCO <b>135.075</b>	UNICOM <b>123.075 (CTAF) 0</b>
--------------------------	---------------------------------------	-----------------------	-----------------------------------



ELEV 19	TDZE 19				
2000	NALDE	VGSI and RNAV glidepath not coincident (VGSI Angle 3.00/TCH 42).		ORF VORTAC	
*LNAV only		FUBSY	ZIMON	3000	
*1.3 NM to RWY 23		1600	2600	GP 3.00° TCH 56	
RWY 23		-1.3	3.5 NM	4.1 NM	6.1 NM
CATEGORY	A	B	C	D	
LPV DA	311-1 292 (300-1)				
LNAV/VNAV DA	312-1 293 (300-1)				
LNAV MDA	480-1	461 (500-1)	480-1 $\frac{3}{8}$ 461 (500-1 $\frac{3}{8}$ )		

NE-3, 16 JUN 2022 to 14 JUL 2022

NE-3, 16 JUN 2022 to 14 JUL 2022