

WAAS CH <b>87129</b> <b>W19A</b>	APP CRS <b>189°</b>	Rwy Idg TDZE Apt Elev	<b>4502</b> <b>898</b> <b>898</b>
--	------------------------	-----------------------------	---

# RNAV (GPS) RWY 19

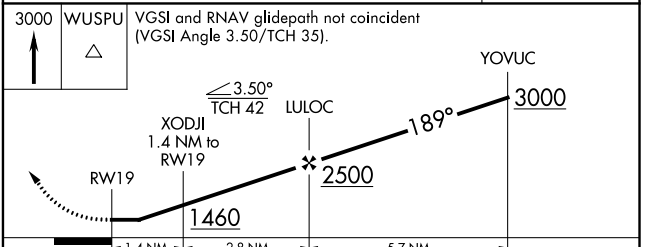
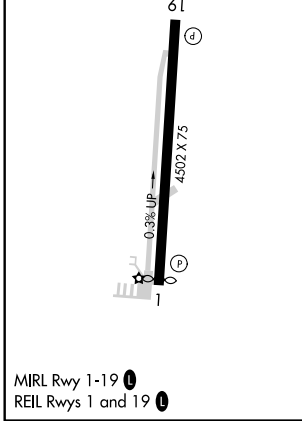
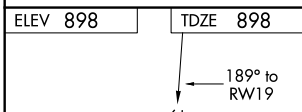
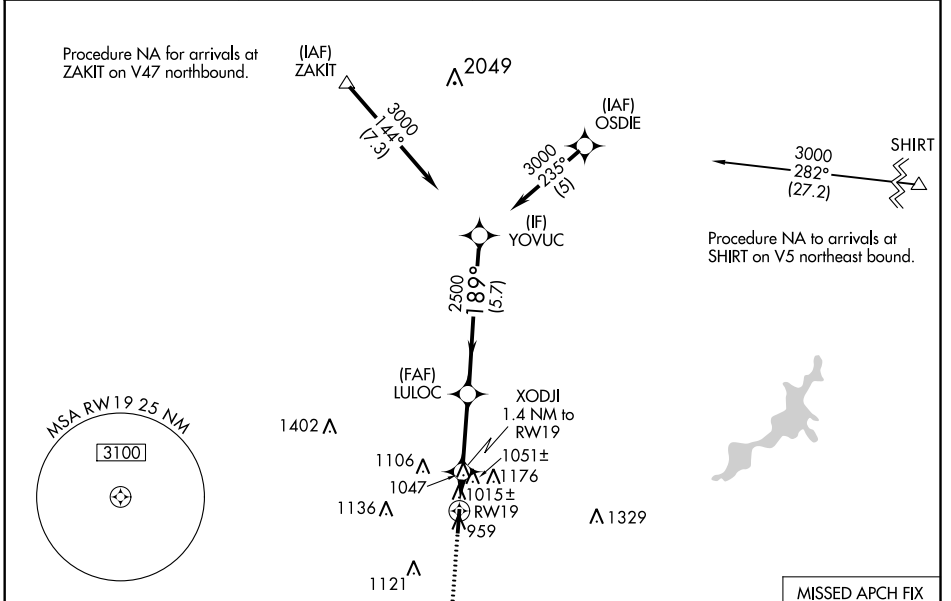
WARREN COUNTY/JOHN LANE FLD (I68)

RNP APCH.

**NA** Rwy 19 helicopter visibility reduction below 1 SM NA. When local altimeter setting not received, use Dayton-Wright Brothers altimeter setting and increase all MDAs 40 feet, and LP and LNAV Cat C and D visibilities 1/8 SM and Circling Cat C visibility 1/4 SM. Straight-in Rwy 19 and Circling Rwy 19 at night, operational VGSI required, remain on or above VGSI glidepath until threshold.

MISSED APPROACH: Climb to 3000 direct WUSPU and hold.

AWOS-3 <b>120.55</b>	COLUMBUS APP CON <b>118.85 269.275</b>	CLNC DEL <b>119.4</b>	UNICOM <b>123.075 (CTAF) 0</b>
-------------------------	---	--------------------------	-----------------------------------



	A	B	C	D
CATEGORY	A	B	C	D
LP MDA	1280-1	382 (400-1)	1280-1/8	382 (400-1/8)
LNAV MDA	1320-1	422 (500-1)	1320-1/4	422 (500-1/4)
<b>C</b> CIRCLING	1400-1 502 (600-1)	1480-1 582 (600-1)	1480-1/2 582 (600-1/2)	1480-2 582 (600-2)

EC-2, 16 JUN 2022 to 14 JUL 2022

EC-2, 16 JUN 2022 to 14 JUL 2022