

WAAS CH 53629 W01A	APP CRS 009°	Rwy Idg 4407 TDZE 893 Apt Elev 898
--	------------------------	---

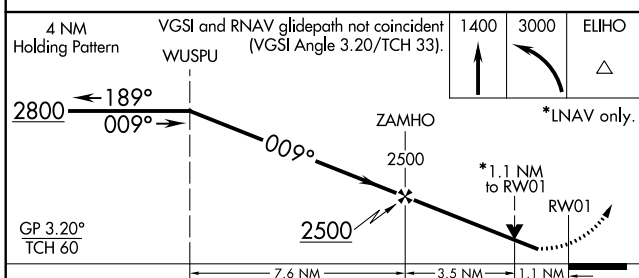
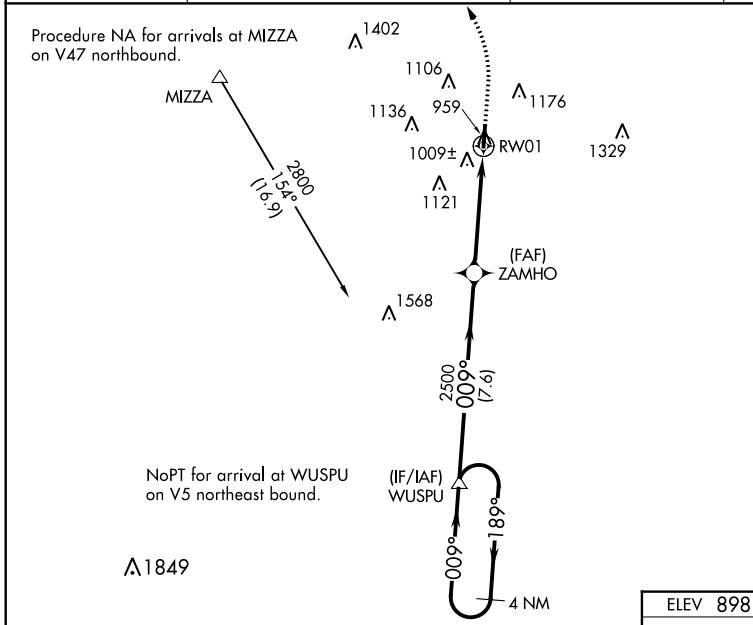
RNAV (GPS) RWY 1

WARREN COUNTY/JOHN LANE FLD (I68)

⚠ For uncompensated Baro-VNAV systems, LNAV/VNAV NA below -16°C (4°F) or above 54°C (130°F). Baro-VNAV and VDP NA when using Dayton-Wright Brothers altimeter setting. DME/DME RNP-0.3 NA. Rwy 1 helicopter visibility reduction below 3/4 SM NA. When local altimeter setting not received use Dayton-Wright Brothers altimeter setting and increase LPV DA to 1183 feet and LNAV/VNAV DA to 1215 and all MDA 40 feet; increase LNAV Cat C/D visibility 1/8 SM and Circling Cat C visibility 1/4 SM. When Circling to Rwy 19 at night, operational VGSI required, remain on or above VGSI glidepath until threshold.

MISSED APPROACH:
Climb to 1400 then climbing left turn to 3000 direct ELIHO and hold.

AWOS-3 120.55	COLUMBUS APP CON 118.85 269.275	CLNC DEL 119.4	UNICOM 123.075 (CTAF)
-------------------------	---	--------------------------	---------------------------------



ELEV 898	TDZE 893
----------	----------

MIRL Rwy 1-19
REIL Rwy 1 and 19

61

4502 X 75

0.3% UP

009° to RWY 1

CATEGORY	A	B	C	D
LPV DA	1157-1 264 (300-1)			NA
LNAV/VNAV DA	1189-1 296 (300-1)			NA
LNAV MDA	1260-1 367 (400-1)			
C CIRCLING	1400-1 502 (600-1)	1480-1 582 (600-1)	1480-1½ 582 (600-1½)	1480-2 582 (600-2)

EC-2, 16 JUN 2022 to 14 JUL 2022

EC-2, 16 JUN 2022 to 14 JUL 2022