

WAAS CH 77516 W35A	APP CRS 355°	Rwy Idg TDZE 25 Apt Elev 25	7000
--	------------------------	---	-------------

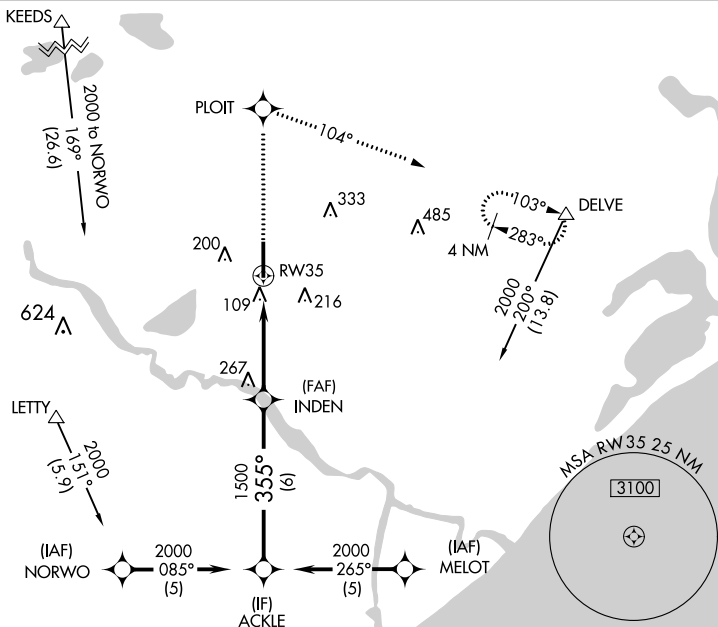
RNAV (GPS) RWY 35

TEXAS GULF COAST RGNL (L.B.X)

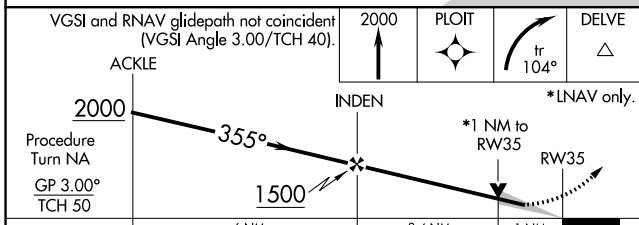
⚠ DME/DME RNP-0.3 NA. Baro-VNAV NA below -16°C (4°F). When local altimeter setting not received, use William P. Hobby altimeter setting and increase all DAs/MDAs 100 feet and Circling Cat D visibility ¼ SM. Baro-VNAV and VDP NA when using William P. Hobby altimeter setting. Circling NA east of Rwy 17-35.

MISSED APPROACH: Climb to 2000 direct PLOIT and right turn via 104° track to DELVE and hold.

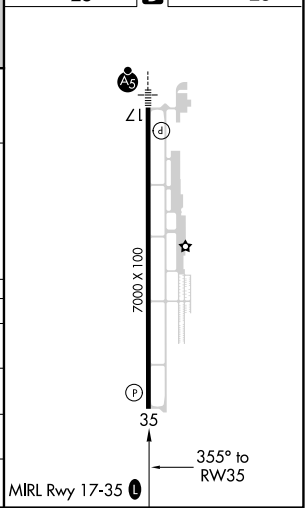
ASOS 119.925	HOUSTON APP CON 134.45 284.0	CLNC DEL 125.2	UNICOM 123.0 (CTAF) 0
------------------------	--	--------------------------	---------------------------------



ELEV 25	D TDZE 25
----------------	-------------------------



CATEGORY	A	B	C	D
LPV DA		275-¾	250 (300-¾)	
LNAV/VNAV DA		428-1½	403 (500-1½)	
LNAV MDA		420-1	395 (400-1)	420-1¼ 395 (400-1¼)
C CIRCLING	480-1½ 455 (500-1½)	500-1½	475 (500-1½)	620-2 595 (600-2)



SC-5, 16 JUN 2022 to 14 JUL 2022

SC-5, 16 JUN 2022 to 14 JUL 2022