

VOR/DME SHB	APP CRS	Rwy Idg	<b>3902</b>
<b>112.0</b>	<b>346°</b>	TDZE	<b>858</b>
Chan <b>57</b>		Apt Elev	<b>862</b>

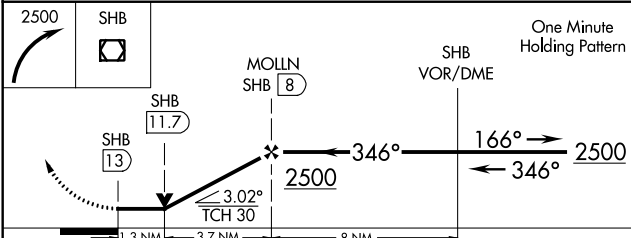
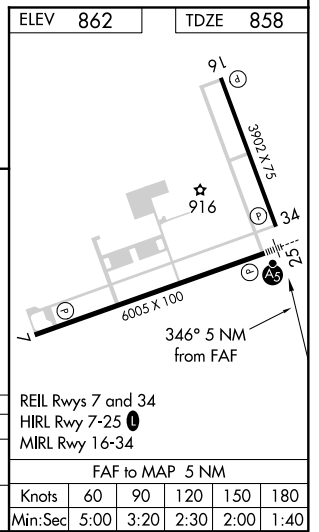
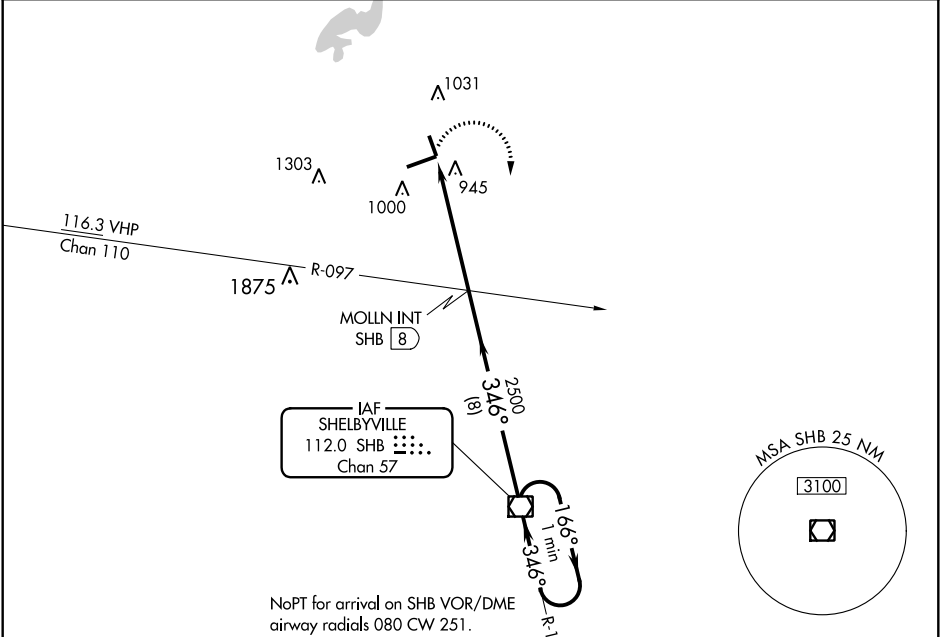
# VOR RWY 34

INDIANAPOLIS RGNL (MQJ)

**NA** When local altimeter setting not received, use Indianapolis Intl altimeter setting and increase all MDA 60 feet and Circling Cat D visibility ¼ SM. VDP NA when using Indianapolis Intl altimeter setting.

MISSED APPROACH: Climbing right turn to 2500 direct SHB VOR/DME and hold.

AWOS-3	INDIANAPOLIS APP CON	CLNC DEL	UNICOM
<b>124.175</b>	<b>127.15 317.8</b>	<b>119.25</b>	<b>122.975 (CTAF) 0</b>



CATEGORY	A	B	C	D
S-34	1300-1	442 (500-1)	1300-1 3/8	442 (500-1 3/8)
<b>CIRCLING</b>	1340-1	478 (500-1)	1360-1 1/2	1660-2 1/2
			498 (500-1 1/2)	798 (800-2 1/2)

EC-2, 16 JUN 2022 to 14 JUL 2022

EC-2, 16 JUN 2022 to 14 JUL 2022