

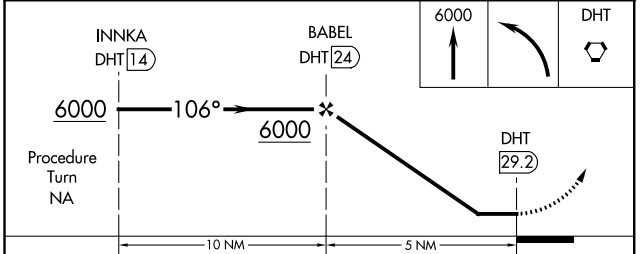
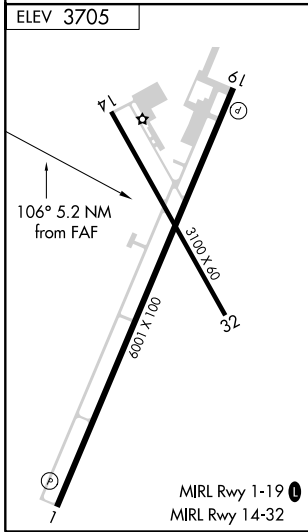
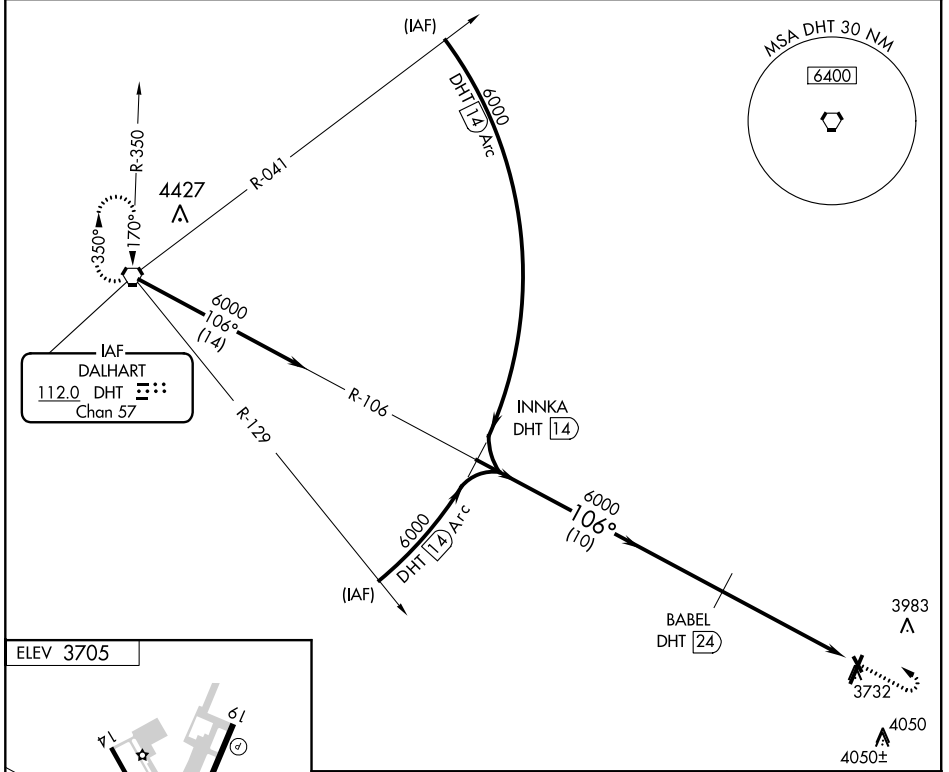
APP CRS 106°	Rwy Idg TDZE Apt Elev	N/A N/A 3705
------------------------	-----------------------------	---

VOR/DME-A
MOORE COUNTY (DUX)

NA Obtain local altimeter on CTAF; when not received, use Amarillo altimeter setting. When neither received, procedure not authorized. Helicopter visibility reduction below 1 SM NA. Night landing: Rwy 14, 32 NA.

MISSED APPROACH: Climb to 6000 then turn left direct DHT VORTAC and hold.

AWOS-3 118.075	ALBUQUERQUE CENTER 127.85 285.475	UNICOM 122.8 (CTAF) 0
--------------------------	---	---------------------------------



CATEGORY	A	B	C	D
CIRCLING	4700-1¼ 995 (1000-1½)	4700-1½ 995 (1000-1½)	4700-3	995 (1000-3)
AMARILLO ALTIMETER SETTING MINIMUMS				
CIRCLING	4820-1¼ 1115 (1200-1½)	4820-1½ 1115 (1200-1½)	4820-3	1115 (1200-3)

SC-2, 16 JUN 2022 to 14 JUL 2022

SC-2, 16 JUN 2022 to 14 JUL 2022