

VORTAC RMG <b>115.4</b> Chan 101	APP CRS <b>108°</b>	Rwy ldg <b>5233</b> TDZE <b>1028</b> Apt Elev <b>1040</b>
--	------------------------	---

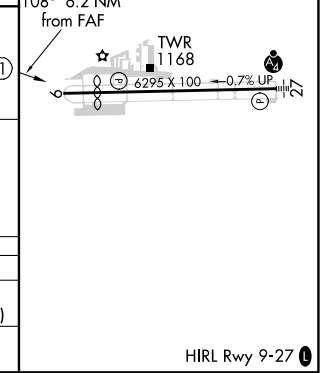
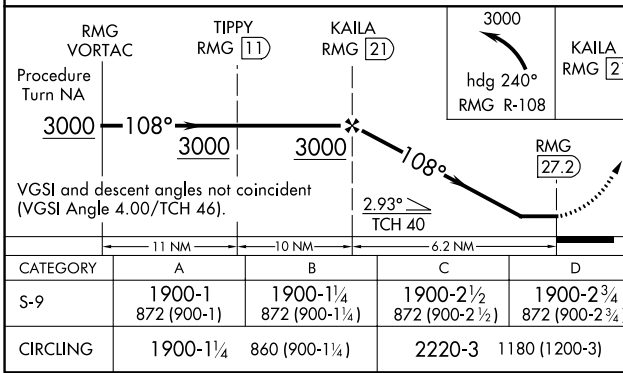
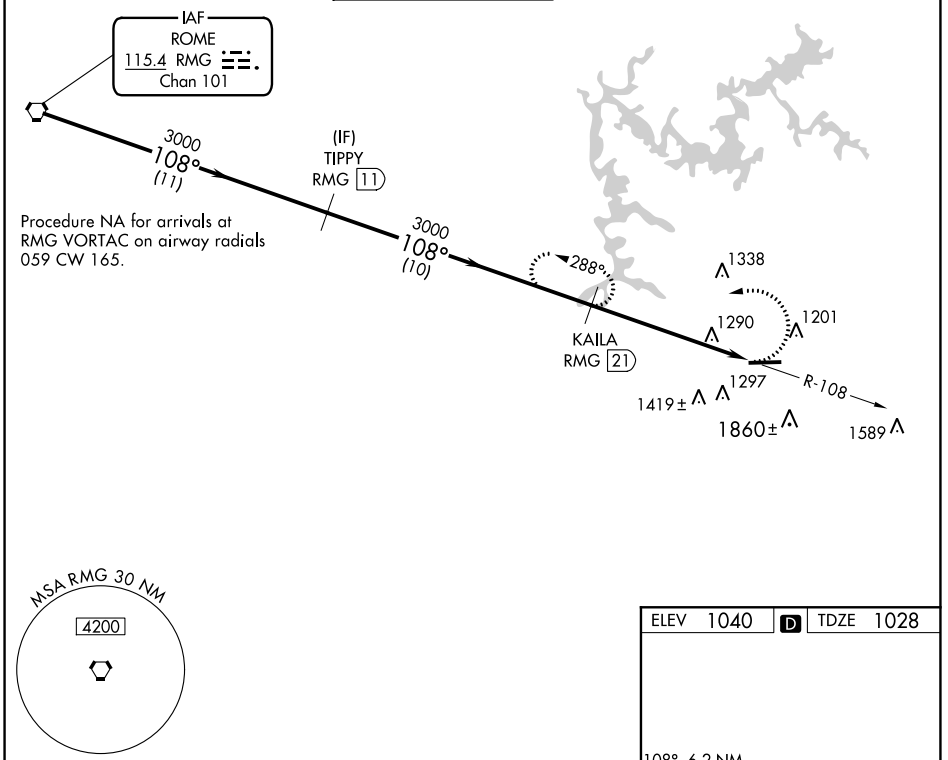
# VOR/DME RWY 9

COBB COUNTY INTL/MCCOLLUM FLD (RYY)

**⚠** Helicopter visibility reduction below 1 SM NA. When local altimeter setting not received, use Hartsfield-Jackson Atlanta Intl altimeter setting and increase all MDA 60 feet and S-9 Cat A/C/D visibilities ¼ mile. Night landing: Rwy 9 NA.

**MISSED APPROACH:** Climbing left turn to 3000 via heading 240° and RMG R-108 to KAILA/21 DME and hold.

ATIS <b>128.125</b>	ATLANTA APP CON <b>121.0 268.7</b>	MCCOLLUM TOWER ★ <b>125.9 (CTAF) 0</b>	GND CON <b>119.0</b>	CLNC DEL <b>119.0 268.7</b>	UNICOM <b>122.7</b>
------------------------	---------------------------------------	---	-------------------------	--------------------------------	------------------------



SE-4, 16 JUN 2022 to 14 JUL 2022

SE-4, 16 JUN 2022 to 14 JUL 2022