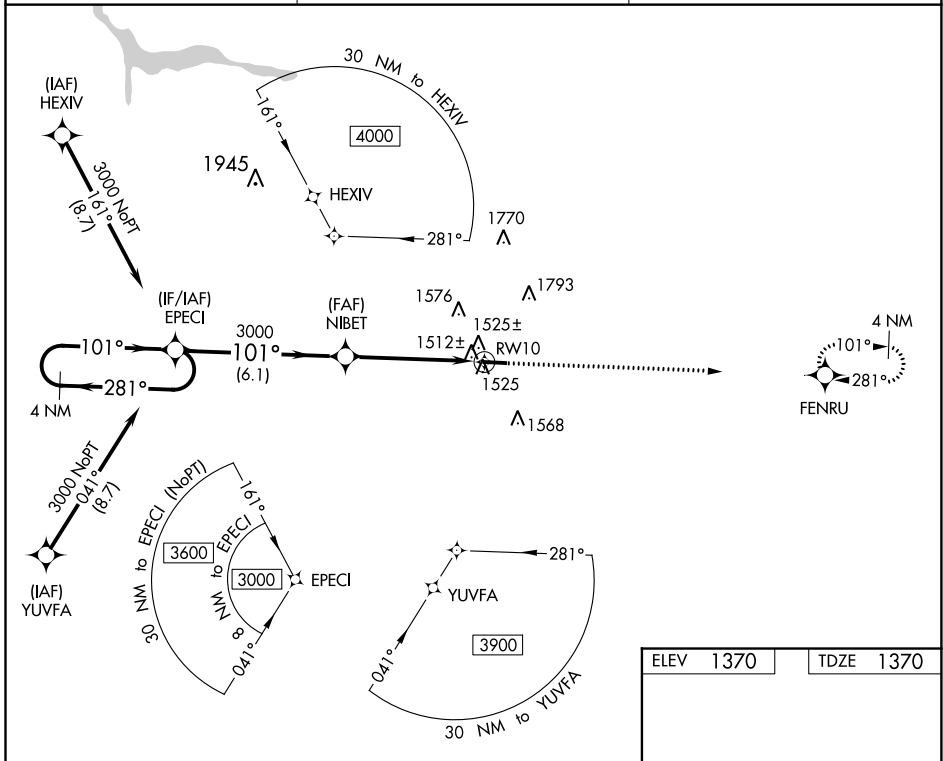


| | | | |
|--|------------------------|-----------------------------|---|
| WAAS CH 50432 W10A | APP CRS 101° | Rwy Idg TDZE Apt Elev | 4500 1370 1370 |
|--|------------------------|-----------------------------|---|

RNAV (GPS) RWY 10

GROVE CITY (29D)

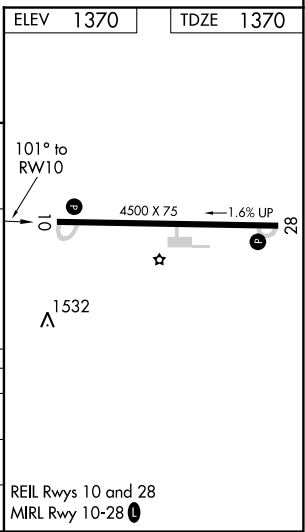
| | | |
|--|--|--|
| RNP APCH. | MISSED APPROACH: Climb to 4000 direct FENRU and hold | |
| ▼ ▲ NA Use Franklin altimeter setting; when not received, use New Castle altimeter setting. | | |
| FKL AWOS 3-PT 118.175 | YOUNGSTOWN APP CON ★ 133.95 322.3 | UNICOM 122.725 (CTAF) 0 |



NE-4, 16 JUN 2022 to 14 JUL 2022

NE-4, 16 JUN 2022 to 14 JUL 2022

| | | | | | |
|--|--------|--------------|-------|---------------------|-------|
| 4 NM Holding Pattern | | EPECI | NIBET | 4000 | FENRU |
| 3000 ← 281° | | 101° → | 3000 | ↑ | ★ |
| VGSI and descent angles not coincident (VGSI Angle 3.80/TCH 37). | | RWY 10 | | 101° to RWY 10 | |
| | | 3.00° TCH 40 | | 4500 X 75 ← 1.6% UP | |
| | | 6.1 NM | | 5 NM | |
| CATEGORY | A | B | C | D | |
| LP MDA | 1840-1 | 470 (500-1) | | NA | |
| LNAV MDA | 1860-1 | 490 (500-1) | | NA | |
| CIRCLING | 1920-1 | 550 (600-1) | | NA | |



REIL Rwy 10 and 28
MIRL Rwy 10-28 **0**