

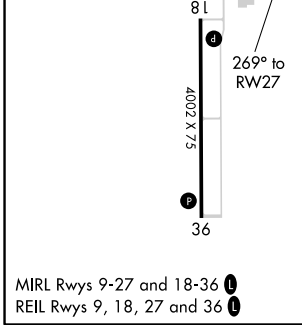
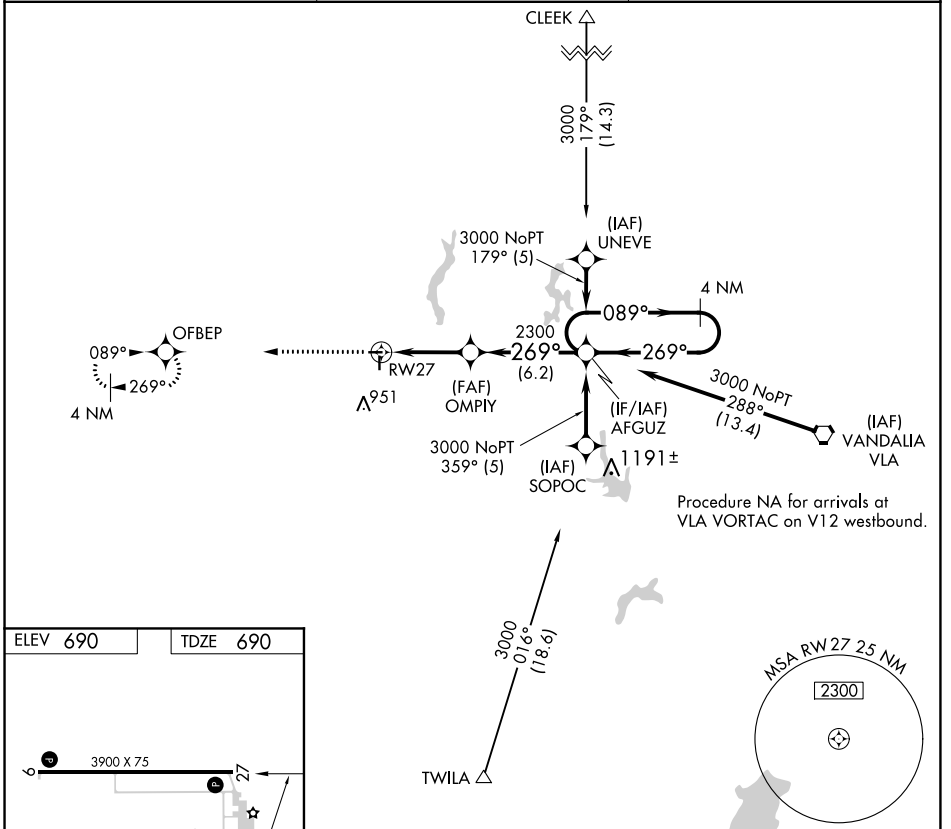
APP CRS	Rwy Idg	3900
269°	TDZE	690
	Apt Elev	690

RNAV (GPS) RWY 27

LITCHFIELD MUNI (3LF)

RNP APCH.	MISSED APPROACH: Climb to 3000 direct OFBEP and hold.
<p>⚠ VDP NA with Taylorville altimeter setting. Rwy 27 helicopter visibility reduction below 3/4 SM NA. When local altimeter setting not received, use Taylorville altimeter setting and increase all MDA 80 feet and LNAV Cat C visibility to 1 3/8 SM.</p>	

AWOS-3 118.175	ST. LOUIS APP CON 124.2 353.9	UNICOM 122.8 (CTAF)
--------------------------	---	-------------------------------



3000	OFBEP	4 NM Holding Pattern		
1.3 NM to RWY 27	OMPIY	AFGUZ		
≤ 3.04° TCH 57	2300	089° → 3000		
		← 269°		
		VGSI and descent angles not coincident (VGSI Angle 3.00/TCH 24).		
CATEGORY	A	B	C	D
LNAV MDA	1120-1	430 (500-1)	1120-1 1/4 430 (500-1 1/4)	NA

EC-3, 16 JUN 2022 to 14 JUL 2022

EC-3, 16 JUN 2022 to 14 JUL 2022