

LOC/DME I-FKO <b>111.1</b> Chan <b>48</b>	APP CRS <b>152°</b>	Rwy Idg <b>5100</b> TDZE <b>58</b> Apt Elev <b>58</b>
---	------------------------	---

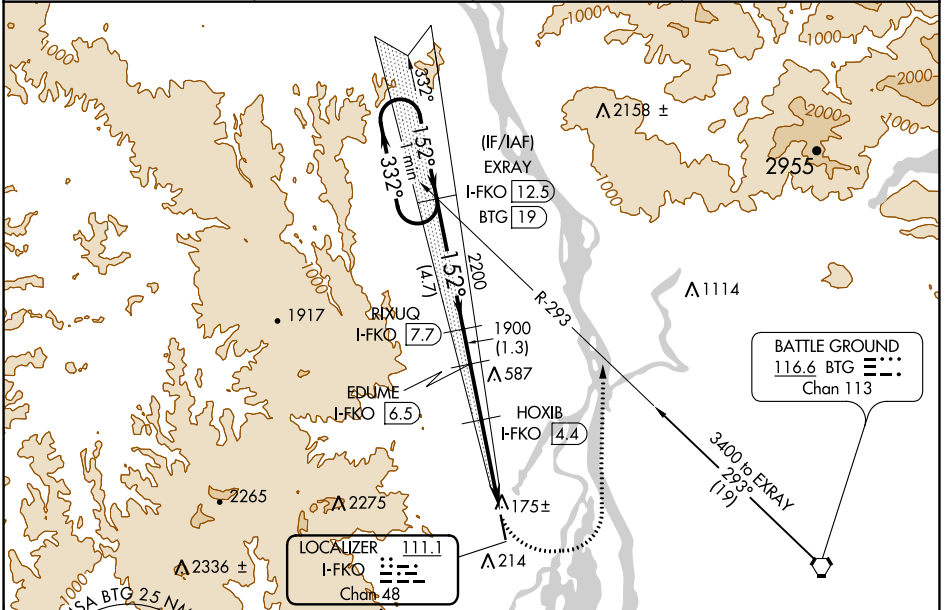
# LOC/DME RWY 15

SCAPPOOSE (SPB)

**⚠** Circling NA west of Rwy 15-33. When local altimeter setting not received, use Portland Intl altimeter setting and increase all MDA 40 feet; increase S-15 Cat C/D visibility and Circling Cat C visibility 1/8 mile, Cat D visibility 1/4 mile. Helicopter visibility reduction below 1 SM NA. Night Landing Rwy 15 NA.

**MISSED APPROACH:** Climbing left turn to 3000 on heading 020° and on BTG VORTAC R-293 to EXRAY/I-FKO 12.5 DME and hold.

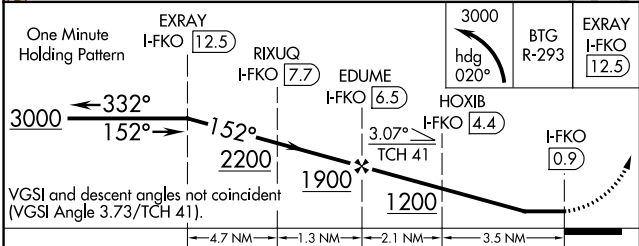
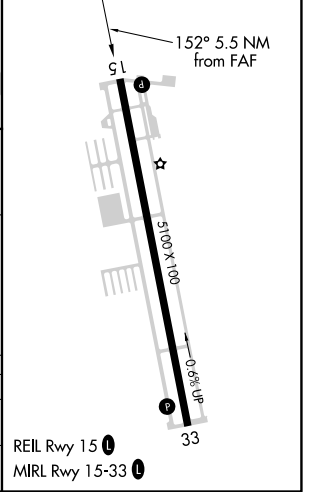
ASOS <b>135.875</b>	PORTLAND APP CON <b>124.35 299.2</b>	CLNC DEL <b>121.65</b>	UNICOM <b>122.8 (CTAF) 0</b>
------------------------	---	---------------------------	---------------------------------



NW-1, 16 JUN 2022 to 14 JUL 2022

NW-1, 16 JUN 2022 to 14 JUL 2022

ELEV 58	TDZE 58
---------	---------



CATEGORY	A	B	C	D
S-15	660-1 602 (700-1)		660-1¾ 602 (700-1¾)	
<b>C</b> CIRCLING	660-1 602 (700-1)		660-1¾ 602 (700-1¾)	860-2½ 802 (900-2½)