

WAAS CH <b>40216</b> <b>W09A</b>	APP CRS <b>094°</b>	Rwy Idg <b>5390</b> TDZE <b>569</b> Apt Elev <b>569</b>
--	------------------------	---

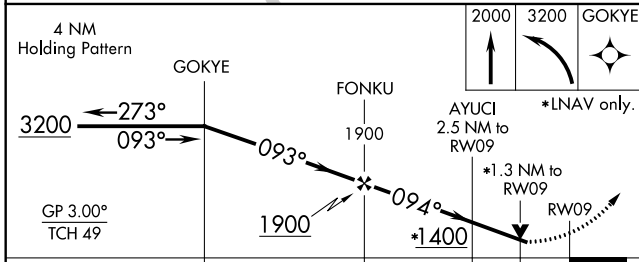
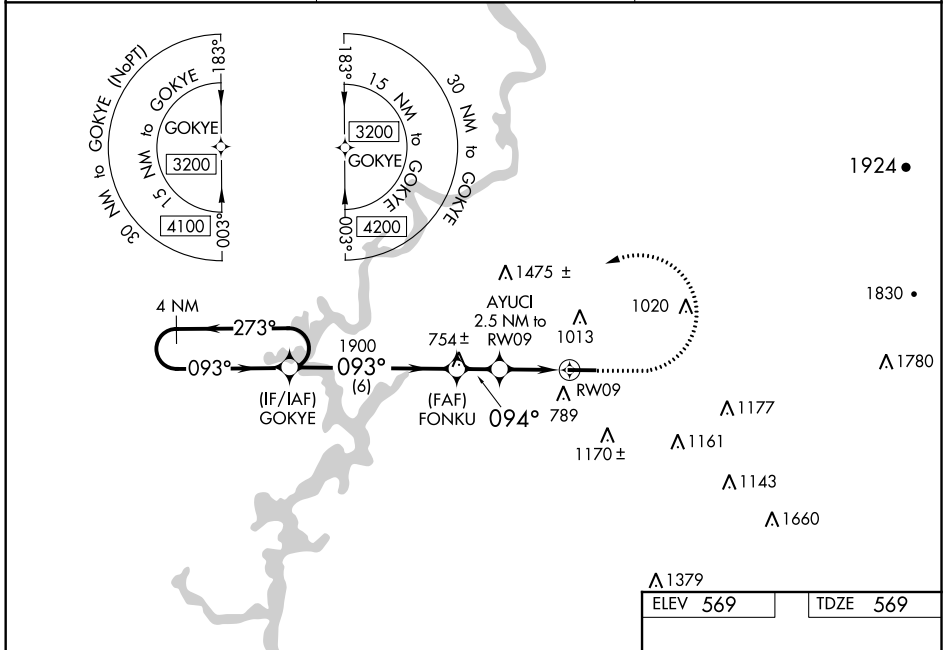
# RNAV (GPS) RWY 9

MERKEL FIELD SYLAUCA MUNI (SCD)

**⚠** Baro-VNAV NA when using Birmingham altimeter setting. For uncompensated Baro-VNAV systems, LNAV/VNAV NA below -20°C (-4°F) or above 54°C (130°F).  
**⚠** DME/DME RNP-0.3 NA. Helicopter visibility reduction below 3/4 SM NA. When local altimeter setting not received; use Birmingham altimeter setting and increase LPV DA to 1066, LNAV/VNAV DA to 1139 and all visibilities 3/8 mile. Increase all MDA 100 feet and LNAV Cats C and D visibility 1/8 mile. VDP NA when using Birmingham altimeter setting.

MISSED APPROACH: Climb to 2000 then climbing left turn to 3200 direct GOKYE and hold.

AWOS-3PT <b>119.125</b>	BIRMINGHAM APP CON <b>123.8 256.8</b>	UNICOM <b>122.8 (CTAF) 0</b>
----------------------------	--	---------------------------------



ELEV 569	TDZE 569
----------	----------

CATEGORY	A	B	C	D
LPV DA		979-1 <sup>3</sup> / <sub>8</sub>	410 (500-1 <sup>3</sup> / <sub>8</sub> )	
LNAV/VNAV DA		1052-1 <sup>5</sup> / <sub>8</sub>	483 (500-1 <sup>5</sup> / <sub>8</sub> )	
LNAV MDA	1020-1	451 (500-1)	1020-1 <sup>3</sup> / <sub>8</sub>	451 (500-1 <sup>3</sup> / <sub>8</sub> )
<b>C</b> CIRCLING	1140-1 571 (600-1)	1400-1 <sup>1</sup> / <sub>4</sub> 831 (900-1 <sup>1</sup> / <sub>4</sub> )	1620-3 1051 (1100-3)	1700-3 1131 (1200-3)

2000 3200 GOKYE

AYUCI 2.5 NM to RW09

\*LNAV only.

GP 3.00° TCH 49

0.4% UP

5390 X 100

094° to RW09

MIRL Rwy 9-27 0

REIL Rws 9 and 27 0

SE-4, 16 JUN 2022 to 14 JUL 2022

SE-4, 16 JUN 2022 to 14 JUL 2022