

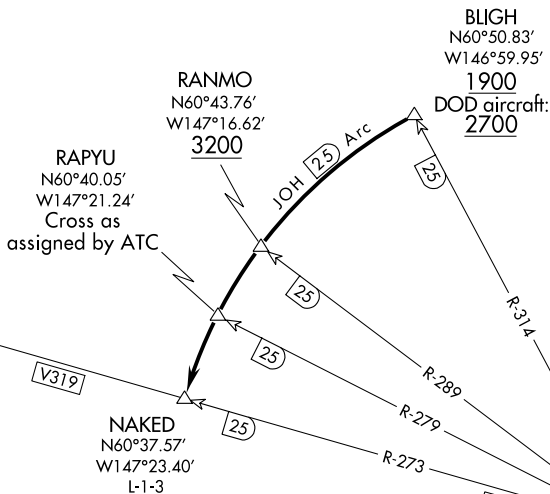
(NAKED6.NAKED) 21224
NAKED SIX DEPARTURE

AL-6213 (FAA)

VALDEZ PIONEER FLD (VDZ) (PAVD)
 VALDEZ, ALASKA

ANCHORAGE CENTER
 119.3 269.4
 JUNEAU RADIO
 122.2
 CTAF
 122.9

**TOP ALTITUDE:
 ASSIGNED BY ATC**



TAKEOFF MINIMUMS
 Rwy 6, 24: 2000-3 (DOD aircraft 3500-3)
 NA at night.

NOTE: Do not proceed CCW beyond BLIGH without ATC clearance.
 NOTE: DME required.

NOTE: Chart not to scale.

DEPARTURE ROUTE DESCRIPTION

Proceed in visual conditions from Valdez airport to BLIGH (JOH R-314/25 DME) to cross BLIGH at or above 1900' (visual conditions must be maintained from takeoff until established over BLIGH at or above 1900') (DOD aircraft: Cross BLIGH at or above 2700'). Proceed CCW on JOH 25 DME arc to NAKED; cross RANMO at or above 3200'. Cross RAPYU as assigned by ATC. Thence via (assigned route).

NAKED SIX DEPARTURE
 (NAKED6.NAKED) 21JUL16

VALDEZ, ALASKA
 VALDEZ PIONEER FLD (VDZ) (PAVD)

AK, 19 MAY 2022 to 14 JUL 2022

AK, 19 MAY 2022 to 14 JUL 2022