

WAAS CH <b>40408</b> <b>W17A</b>	APP CRS <b>165°</b>	Rwy Idg TDZE Apt Elev	<b>5002</b> <b>607</b> <b>610</b>
--	------------------------	-----------------------------	---

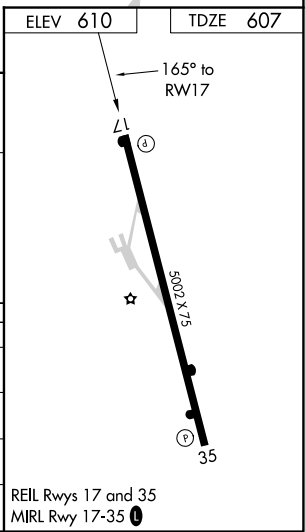
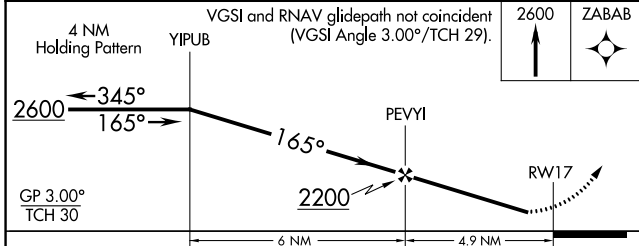
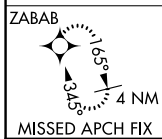
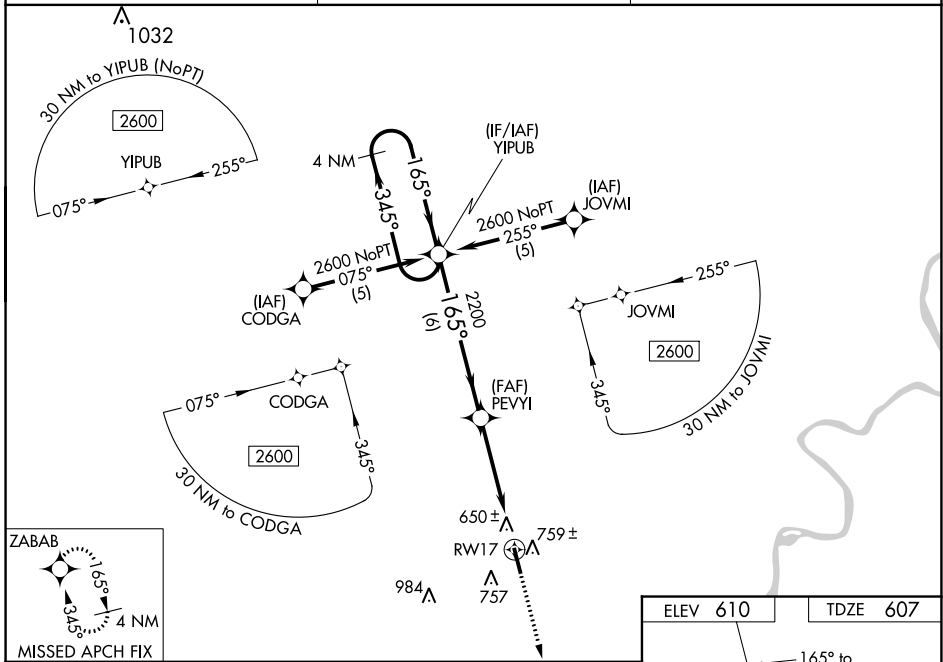
# RNAV (GPS) RWY 17

ROBERT SIBLEY (SZY)

**⚠** Baro-VNAV NA when using Mc Kellar-Sipes Rgnl altimeter setting. For uncompensated Baro-VNAV systems, LNAV/VNAV NA below -16°C (4°F) or above 47°C (116°F). DME/DME RNP-0.3 NA. Helicopter visibility reduction below 1 SM not authorized. When local altimeter setting not received, use Mc Kellar-Sipes Rgnl altimeter setting and increase all DA 97 feet and all MDA 100 feet, LPV and LNAV/VNAV all Cats and LNAV Cat C visibilities ½ mile, and LNAV Cat D visibility ½ mile. Straight-in/Circling Rwy 17 procedure NA at night.

**MISSED APPROACH:**  
Climb to 2600 direct ZABAB and hold.

AWOS-3 <b>118.425</b>	MEMPHIS CENTER <b>124.35 239.3</b>	UNICOM <b>122.7 (CTAF) ①</b>
--------------------------	---------------------------------------	---------------------------------



CATEGORY	A	B	C	D
LPV DA		861-1	254 (300-1)	
LNAV/VNAV DA		1055-1¾	448 (500-1¾)	
LNAV MDA	1020-1	413 (500-1)	1020-1¼	413 (500-1¼)
CIRCLING	1060-1 450 (500-1)	1080-1 470 (500-1)	1080-1½ 470 (500-1½)	1160-2 550 (600-2)

SE-1, 16 JUN 2022 to 14 JUL 2022

SE-1, 16 JUN 2022 to 14 JUL 2022