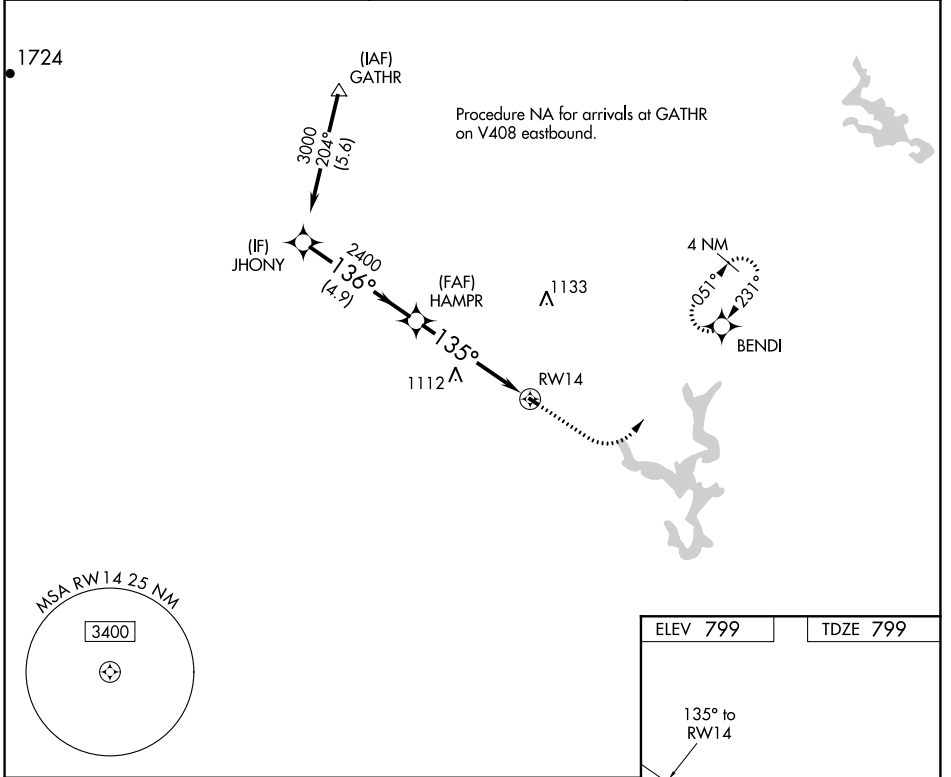


APP CRS	Rwy Idg	<b>1510</b>
<b>135°</b>	TDZE	<b>799</b>
	Apt Elev	<b>799</b>

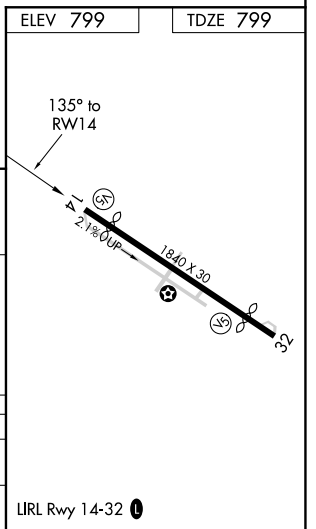
# RNAV (GPS) RWY 14

CLEARVIEW AIRPARK (2W2)

RNP APCH.		MISSED APPROACH: Climb to 1500 then climbing left turn to 3000 direct BENDI and hold.
<p><b>▼</b> Procedure NA at night. Rwy 14 helicopter visibility reduction below 1 SM NA. Use Carroll County Rgnl/Jack B. Poage Fld altimeter setting, when not received, use Gaithersburg altimeter setting and increase all MDA 60 feet.</p> <p><b>▲</b> NA</p>		
DMW AWOS-3 <b>121.25</b>	POTOMAC APP CON <b>125.525 291.625</b>	UNICOM <b>122.8 (CTAF) 0</b>



JHONY	Visual Segment - Obstacles.		1500	3000	BENDI
	3000	136°	HAMPR	2400	135°
4.9 NM		5 NM			
CATEGORY	A	B	C	D	
LNAV MDA	1360-1 561 (600-1)		NA		
CIRCLING	1360-1 561 (600-1)		NA		



NE-3, 16 JUN 2022 to 14 JUL 2022

NE-3, 16 JUN 2022 to 14 JUL 2022