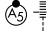


LOC I-DSY <b>110.1</b> Chan <b>38</b>	APP CRS <b>011°</b>	Rwy Idg TDZE <b>253</b> Apt Elev <b>264</b>
---	------------------------	---

# ILS or LOC RWY 1

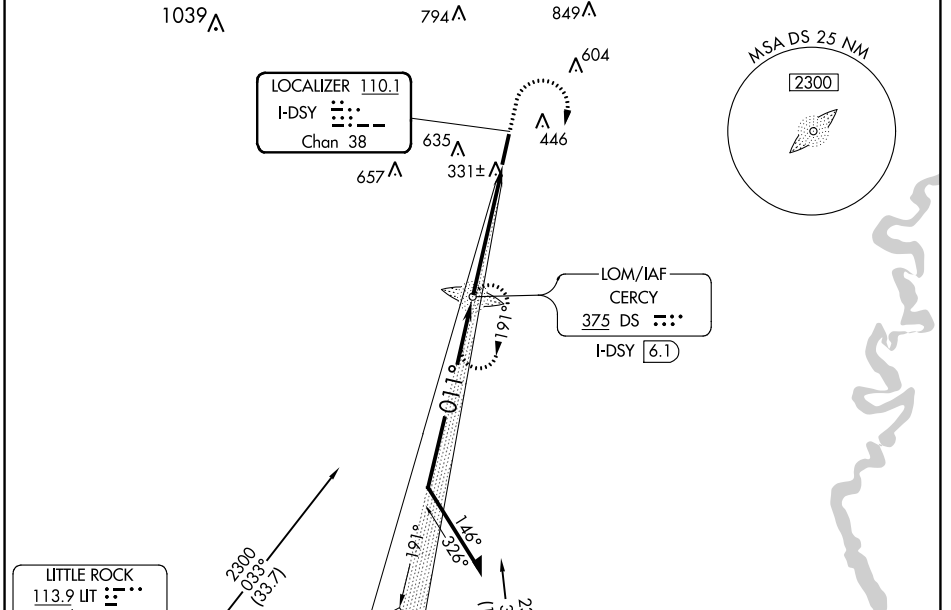
SEARCY MUNI (SRC)

**NA** Circling NA for Cats B and C west of Rwy 1-19. When local altimeter setting not received, use Bill and Hillary Clinton Nil/Adams Fld altimeter setting: increase DA to 542 feet; increase all MDAs 100 feet and increase S-LOC 1 and Circling Cat C visibility ¼ SM. VDP NA with Bill and Hillary Clinton Nil/Adams Fld altimeter setting. ADF required.

MALSR 

MISSED APPROACH: Climb to 800 then climbing right turn to 2300 direct CERCY LOM and hold.

AWOS-3PT <b>128.325</b>	LITTLE ROCK APP CON <b>119.75 291.775</b>	CLNC DEL <b>119.75</b>	UNICOM <b>122.7 (CTAF)</b>
----------------------------	--	---------------------------	-------------------------------



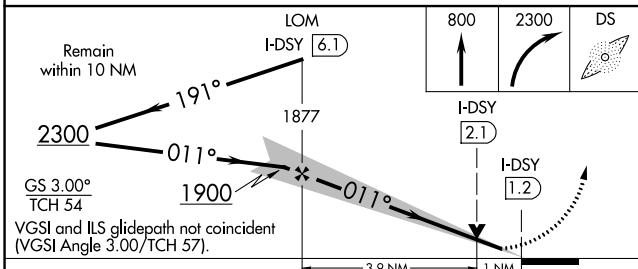
**ADF REQUIRED**

LITTLE ROCK 113.9 MHz Chan 86

2300 033° (33.7)


2300 352° (1159)


TAFTE



CATEGORY	A	B	C	D
S-ILS 1	453-½	200 (200-½)		NA
S-LOC 1	600-½	347 (400-½)		NA
CIRCLING	760-1	496 (500-1)	780-1½ 515 (600-1½)	NA

ELEV 264 61 TDZE 253

REIL Rwy 19 

MIRL Rwy 1-19 

6008 X 100

0.5% UP

011° 4.9 NM from FAF

FAF to MAP 4.9 NM

Knots	60	90	120	150	180
Min:Sec	4:54	3:16	2:27	1:58	1:38

SC-1, 16 JUN 2022 to 14 JUL 2022

SC-1, 16 JUN 2022 to 14 JUL 2022