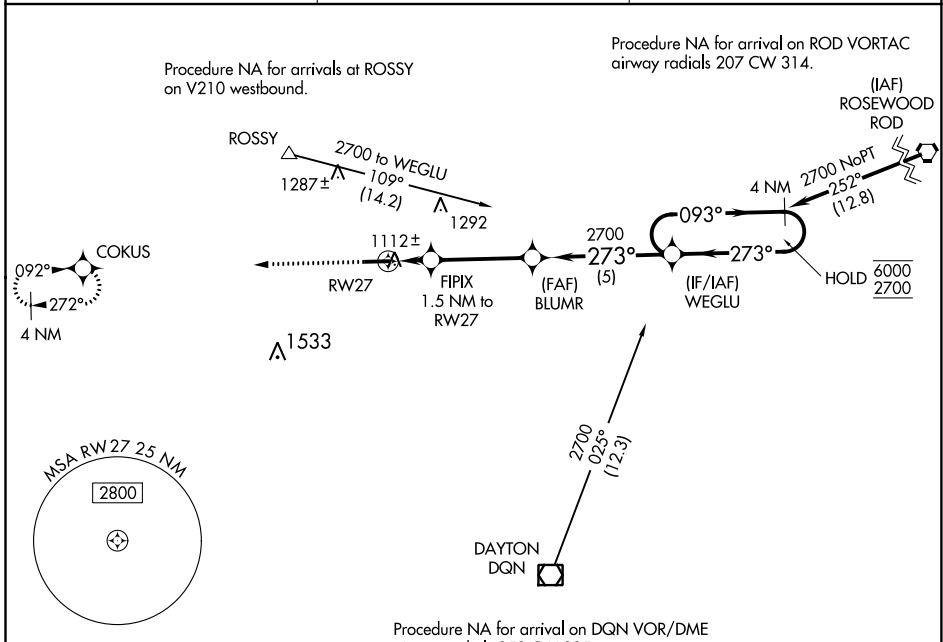


WAAS CH 86243 W27A	APP CRS 273°	Rwy Idg TDZE Apt Elev	4802 1007 1007
---------------------------------	------------------------	-----------------------------	---

RNAV (GPS) RWY 27

DARKE COUNTY (VES)

RNP APCH. ▼ Rwy 27 helicopter visibility reduction below 1 SM NA. Straight-in Rwy 27 NA at night, Circling Rwy 27 NA at night.		MISSED APPROACH: Climb to 2700 direct COKUS and hold.
AWOS-3PT 125.9	COLUMBUS APP CON 118.425 352.05	UNICOM 122.8 (CTAF) ☉



ELEV 1007	TDZE 1007
-----------	-----------

CATEGORY	A	B	C	D
LP MDA	1380-1		373 (400-1)	NA
LNAV MDA	1380-1		373 (400-1)	NA
☑ CIRCLING	1440-1 433 (500-1)	1480-1 473 (500-1)	1660-1¾ 653 (700-1¾)	NA

REIL Rwy 9 and 27 ☉
MIRL Rwy 9-27 ☉

EC-2, 16 JUN 2022 to 14 JUL 2022

EC-2, 16 JUN 2022 to 14 JUL 2022