

APP CRS <b>315°</b>	Rwy Idg <b>5812</b>
	TDZE <b>43</b>
	Apt Elev <b>47</b>

# RNAV (GPS) RWY 31

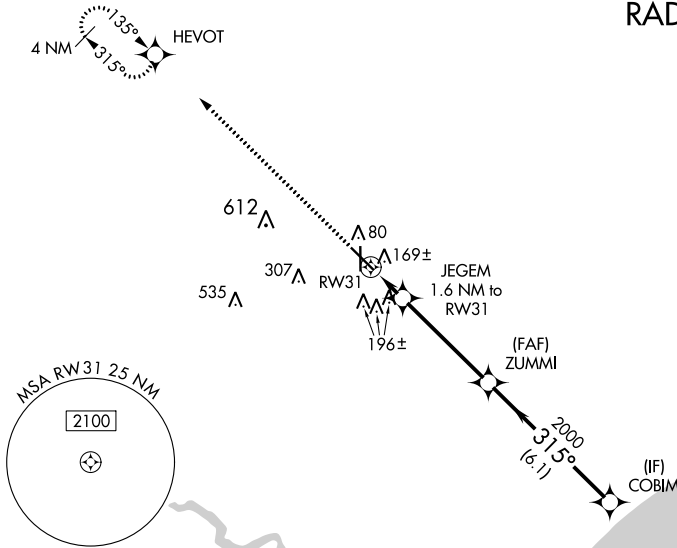
HAMMOND NORTHSORE RGNL (HDC)

**⚠** DME/DME RNP-0.3 NA. Visibility reduction by helicopters NA.  
**⚠** When local altimeter setting not received, use Louis Armstrong New Orleans Intl altimeter setting and increase all MDA 100 feet, increase LNAV Cat C and Circling Cat D visibility ¼ SM, and Circling Cat C visibility ½ SM.  
 VDP NA with Louis Armstrong New Orleans Intl altimeter setting.

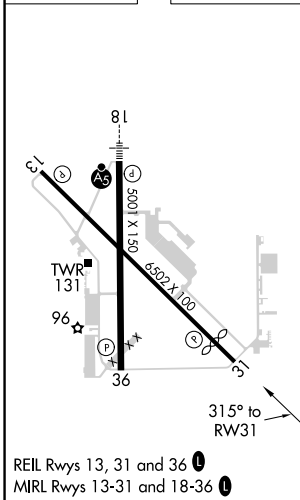
MISSED APPROACH: Climb to 2000 direct HEVOT and hold.

ATIS <b>118.325</b>	NEW ORLEANS APP CON <b>119.3 350.35</b>	HAMMOND TOWER ★ <b>120.575</b> (CTAF) <b>0</b>	GND CON <b>119.85</b>	CLNC DEL <b>119.3</b> (When twr closed)
------------------------	--	---	--------------------------	---

## RADAR REQUIRED



ELEV 47	TDZE 43
---------	---------



2000	HEVOT	ZUMMI	COBIM
	JEGEM 1.6 NM to RW31		
	1.1 NM to RW31	2000	2000
	RW31	315°	
	580	3.05°	
		TCH 50	
		VGSi and descent angles not coincident (VGSi Angle 3.30/TCH 56).	
	1.1	0.5	4.3 NM
			6.1 NM
CATEGORY	A	B	C
LNAV MDA	460-1	417 (500-1)	460-1¼ 417 (500-1¼)
CIRCLING	500-1	453 (500-1)	620-1½ 920-2¾ 573 (600-1½) 873 (900-2¾)

SC-4, 16 JUN 2022 to 14 JUL 2022

SC-4, 16 JUN 2022 to 14 JUL 2022