

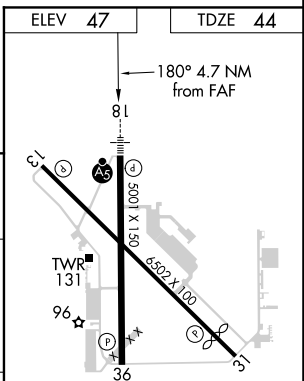
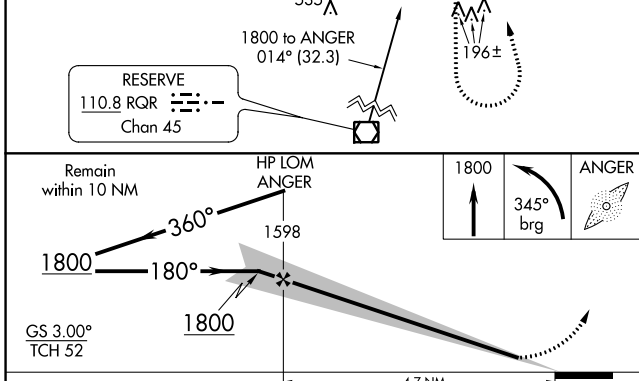
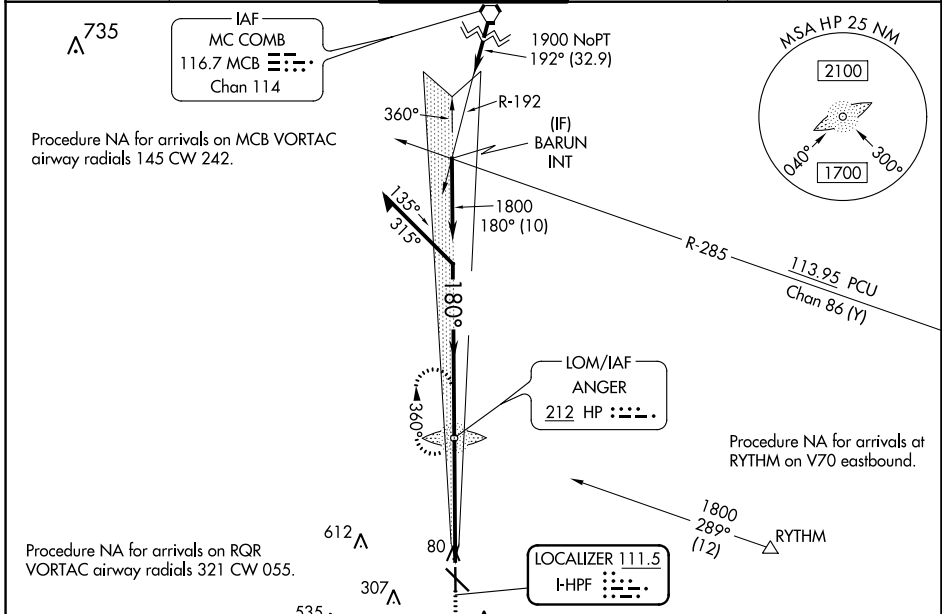
LOC I-HPF <b>111.5</b>	APP CRS <b>180°</b>	Rwy Idg <b>5001</b> TDZE <b>44</b> Apt Elev <b>47</b>
---------------------------	------------------------	---

# ILS or LOC RWY 18

HAMMOND NORTHSORE RGNL (HDC)

ADF required.		MALSR	MISSED APPROACH: Climb to 1800 then left turn on 345° bearing to ANGER LOM and hold.	
<p>▲ NA For inop ALS, increase S-LOC 18 Cat C/D visibility to 1½ SM.</p>				

ATIS <b>118.325</b>	NEW ORLEANS APP CON <b>119.3 350.35</b>	HAMMOND TOWER ★ <b>120.575</b> (CTAF) 0	GND CON <b>119.85</b>	CLNC DEL <b>119.3</b> (When twr closed)
------------------------	--	--	--------------------------	---



CATEGORY	A	B	C	D
S-ILS 18	244-½ 200 (200-½)			
S-LOC 18	540-½ 496 (500-½)	540-1 496 (500-1)		
CIRCLING	540-1 493 (500-1)	620-1½ 573 (600-1½)	920-2¾ 873 (900-2¾)	

REIL Rwy 13, 31 and 36	MIRL Rwy 13-31 and 18-36				
FAF to MAP 4.7 NM					
Knots	60	90	120	150	180
Min:Sec	4:42	3:08	2:21	1:53	1:34

SC-4, 16 JUN 2022 to 14 JUL 2022

SC-4, 16 JUN 2022 to 14 JUL 2022