

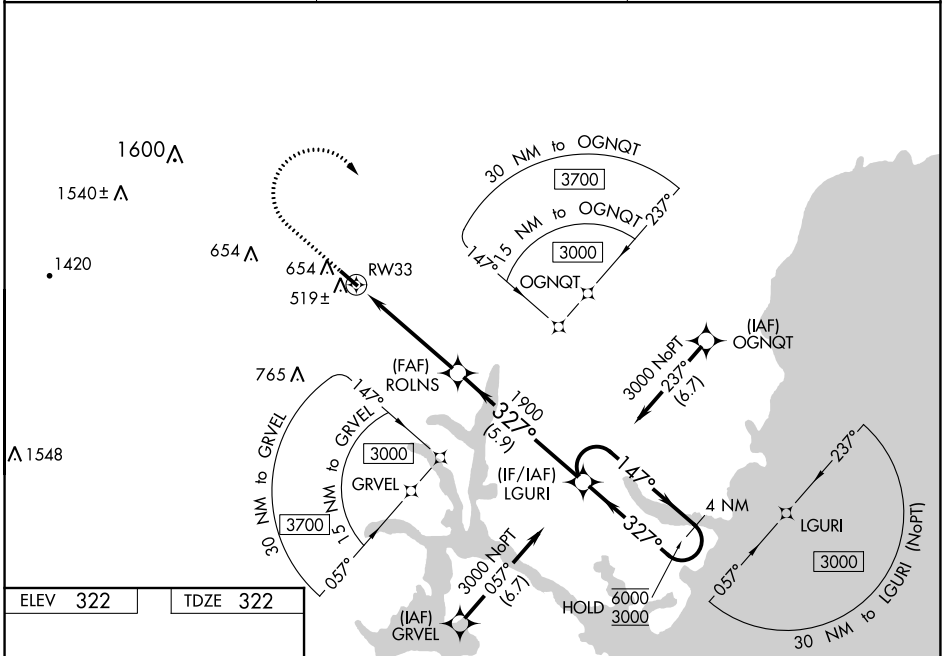
WAAS CH <b>72715</b> <b>W33A</b>	APP CRS <b>327°</b>	Rwy Idg <b>4201</b> TDZE <b>322</b> Apt Elev <b>322</b>
--	------------------------	---

# RNAV (GPS) RWY 33

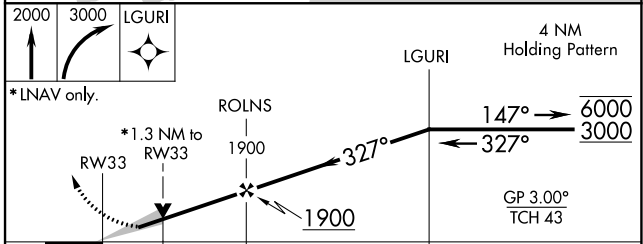
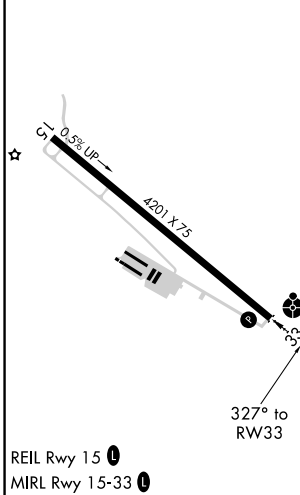
SKYHAVEN (DAW)

RNP APCH - GPS.	ODALS	MISSED APPROACH: Climb to 2000 then climbing right turn to 3000 direct LGURI and hold.
<p>▼ Inop table does not apply to LPV and LNAV/VNAV all Cats.</p> <p>▲ For uncompensated Baro-VNAV systems, LNAV/VNAV NA below -20°C or above 54°C.</p> <p>For inop ALS, increase LNAV visibility Cat A and B to 1 SM and Cat C to 1½ SM.</p>		

ASOS <b>135.275</b>	BOSTON APP CON <b>125.05 269.4</b>	UNICOM <b>122.7 (CTAF) 0</b>
------------------------	---------------------------------------	---------------------------------



ELEV 322	TDZE 322
----------	----------



CATEGORY	A	B	C	D
LPV DA		572-¾	250 (300-¾)	NA
LNAV/VNAV DA		689-1	367 (400-1)	NA
LNAV MDA	780-¾	458 (500-¾)	780-1⅛ 458 (500-1⅛)	NA
CIRCLING	960-1	638 (700-1)	960-1¾ 638 (700-1¾)	NA

NE-1, 16 JUN 2022 to 14 JUL 2022

NE-1, 16 JUN 2022 to 14 JUL 2022