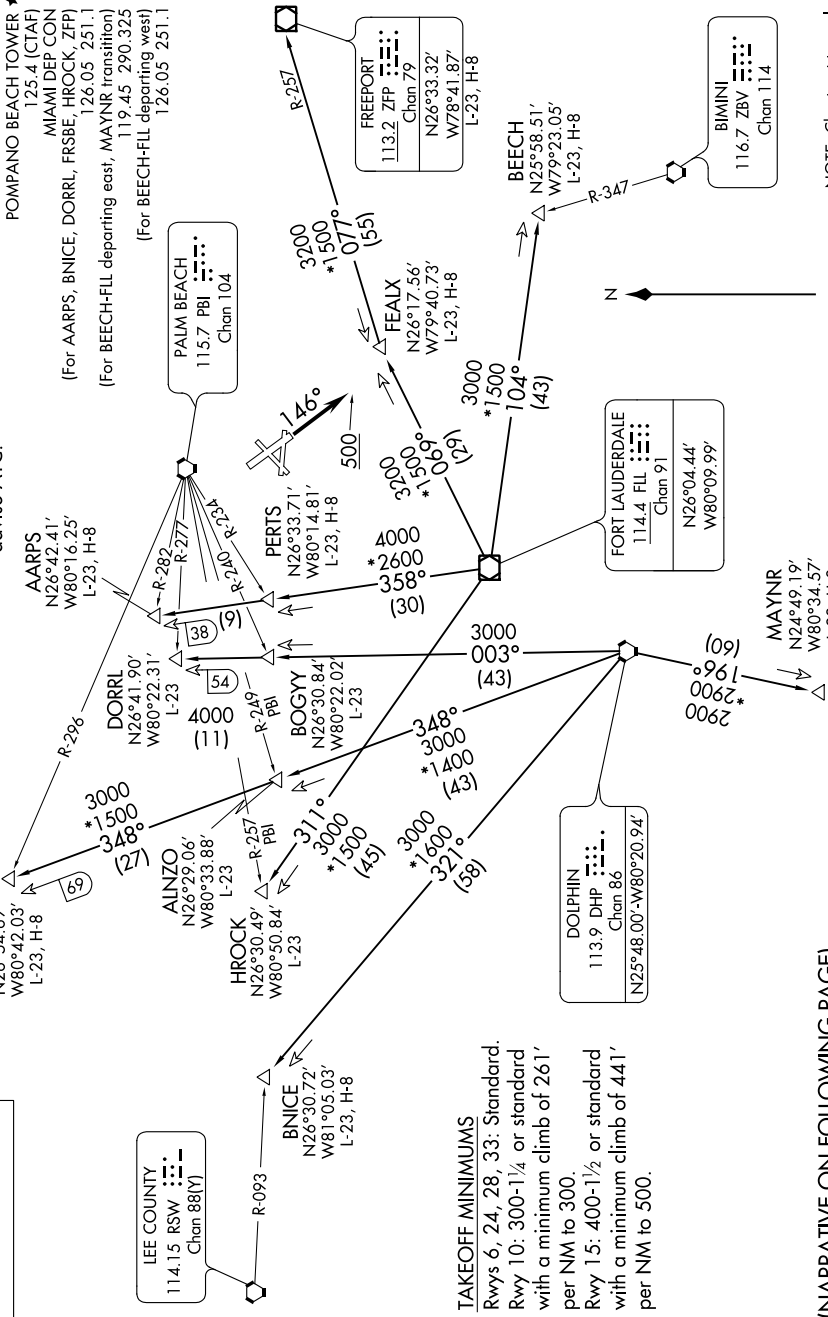


FORT LAUDERDALE NINE DEPARTURE

NOTE: Turbopjet aircraft accelerate to 250K within 7 NM of departure, if unable advise ATC.



NOTE: Chart not to scale.

SE-3, 16 JUN 2022 to 14 JUL 2022

SE-3, 16 JUN 2022 to 14 JUL 2022

TOP ALTITUDE:
As assigned by ATC.

RADAR and DME required.

TAKEOFF MINIMUMS
Rwys 6, 24, 28; 33: Standard.
Rwy 10: 300-1/4 or standard with a minimum climb of 261' per NM to 300.
Rwy 15: 400-1/2 or standard with a minimum climb of 441' per NM to 500.

(NARRATIVE ON FOLLOWING PAGE)