

VOR/DME PSC 113.75 Chan 84(Y)	APP CRS 090°	Rwy Idg TDZE Apt Elev N/A N/A 394
---	------------------------	---

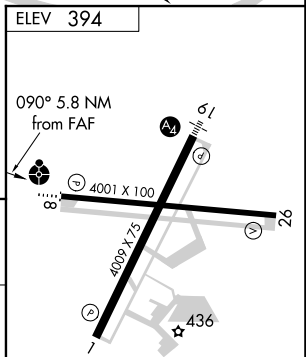
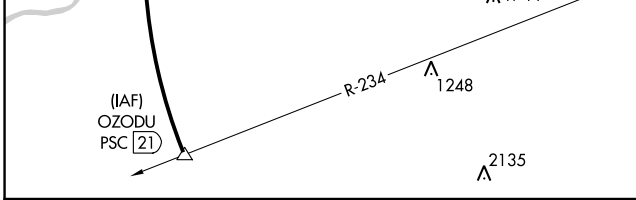
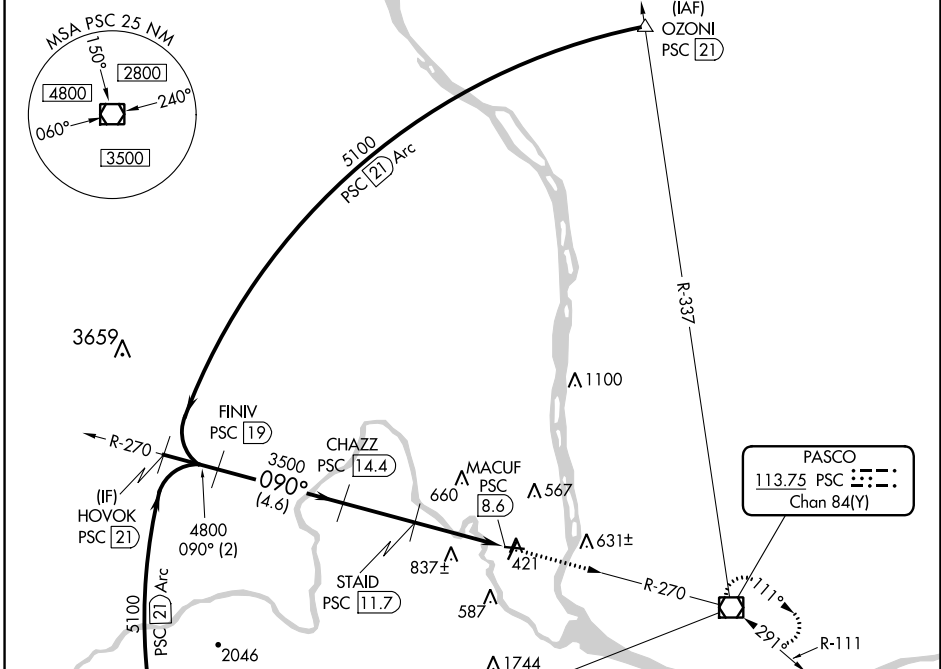
VOR/DME-A

RICHLAND (R.LD)

NA When local altimeter setting not received, use Pasco altimeter setting and increase all MDA 40 feet.

MISSED APPROACH: Climb to 3000 direct PSC VOR/DME and hold.

AWOS-3PT 132.675	CHINOOK APP CON * 128.75 377.2	CLNC DEL 122.4	UNICOM 122.7 (CTAF)
----------------------------	--	--------------------------	-------------------------------



HOVOK PSC 21	FINIV PSC 19	CHAZZ PSC 14.4	STAID PSC 11.7	MACUF PSC 8.6
5100	4800	3500	1540	3000 PSC
2 NM	4.6 NM	2.7 NM	3.1 NM	

CATEGORY	A	B	C	D
CIRCLING	1140-1	746 (800-1)	1200-2¼ 806 (900-2¼)	1940-3 1546 (1600-3)

REIL Rwy 1 and 19
MIRL Rwy 1-19
MIRL Rwy 8-26

NW-1, 16 JUN 2022 to 14 JUL 2022

NW-1, 16 JUN 2022 to 14 JUL 2022