

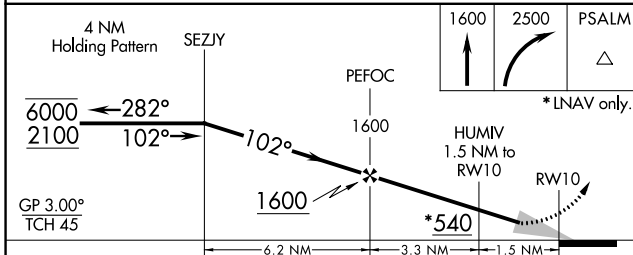
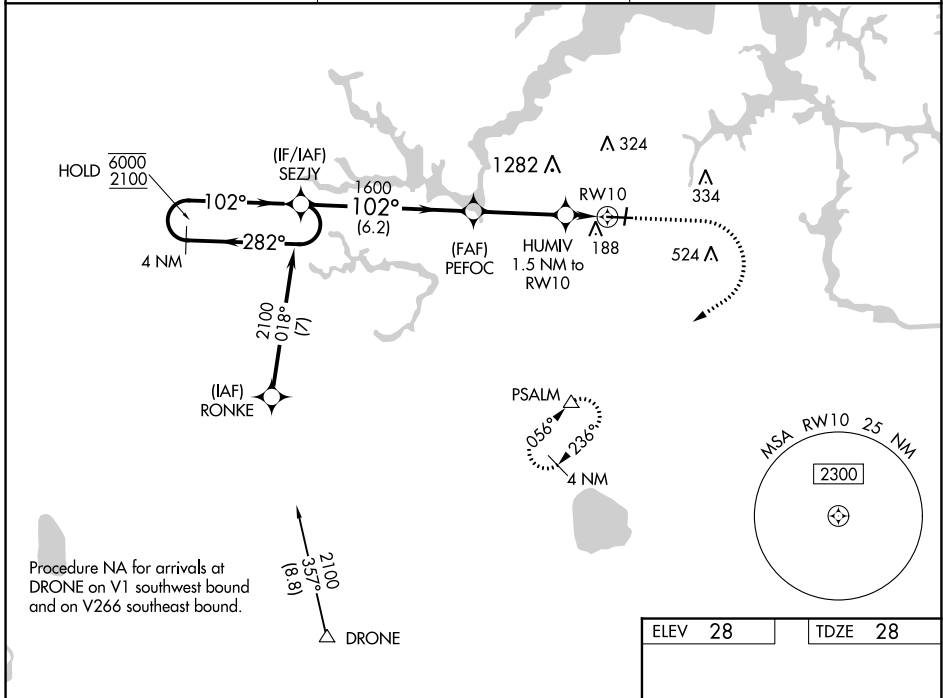
WAAS CH <b>58236</b> <b>W10A</b>	APP CRS <b>102°</b>	Rwy Idg TDZE Apt Elev	<b>5350</b> <b>28</b> <b>28</b>
--	------------------------	-----------------------------	---------------------------------------

# RNAV (GPS) RWY 10

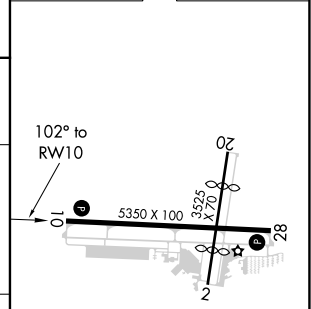
HAMPTON ROADS EXEC (PVG)

RNP APCH. Circling NA to Rwys 2 and 20. Circling Cat C NA north of Rwy 10-28. Rwy 10 helicopter visibility reduction below 3/4 SM NA. For uncompensated Baro-VNAV systems, LNAV/VNAV NA below -15°C or above 54°C.	MISSED APPROACH: Climb to 1600 then climbing right turn to 2500 direct PSALM and hold.
--	--

AWOS-3PT <b>118.375</b>	NORFOLK APP CON <b>118.9 353.7</b>	UNICOM <b>122.725 (CTAF) 0</b>
----------------------------	---------------------------------------	-----------------------------------



ELEV 28	TDZE 28
---------	---------



CATEGORY	A	B	C	D
LPV DA	228-3/4	200 (200-3/4)		NA
LNAV/VNAV DA	338-7/8	310 (400-7/8)		NA
LNAV MDA	420-1	392 (400-1)	420-1 1/8 392 (400-1 1/8)	NA
CIRCLING	500-1	472 (500-1)	780-2 1/4 752 (800-2 1/4)	NA

HIRL Rwy 10-28 **0**  
 REIL Rwys 10 and 28 **0**  
 MIRL Rwy 2-20 **0**

NE-3, 16 JUN 2022 to 14 JUL 2022

NE-3, 16 JUN 2022 to 14 JUL 2022