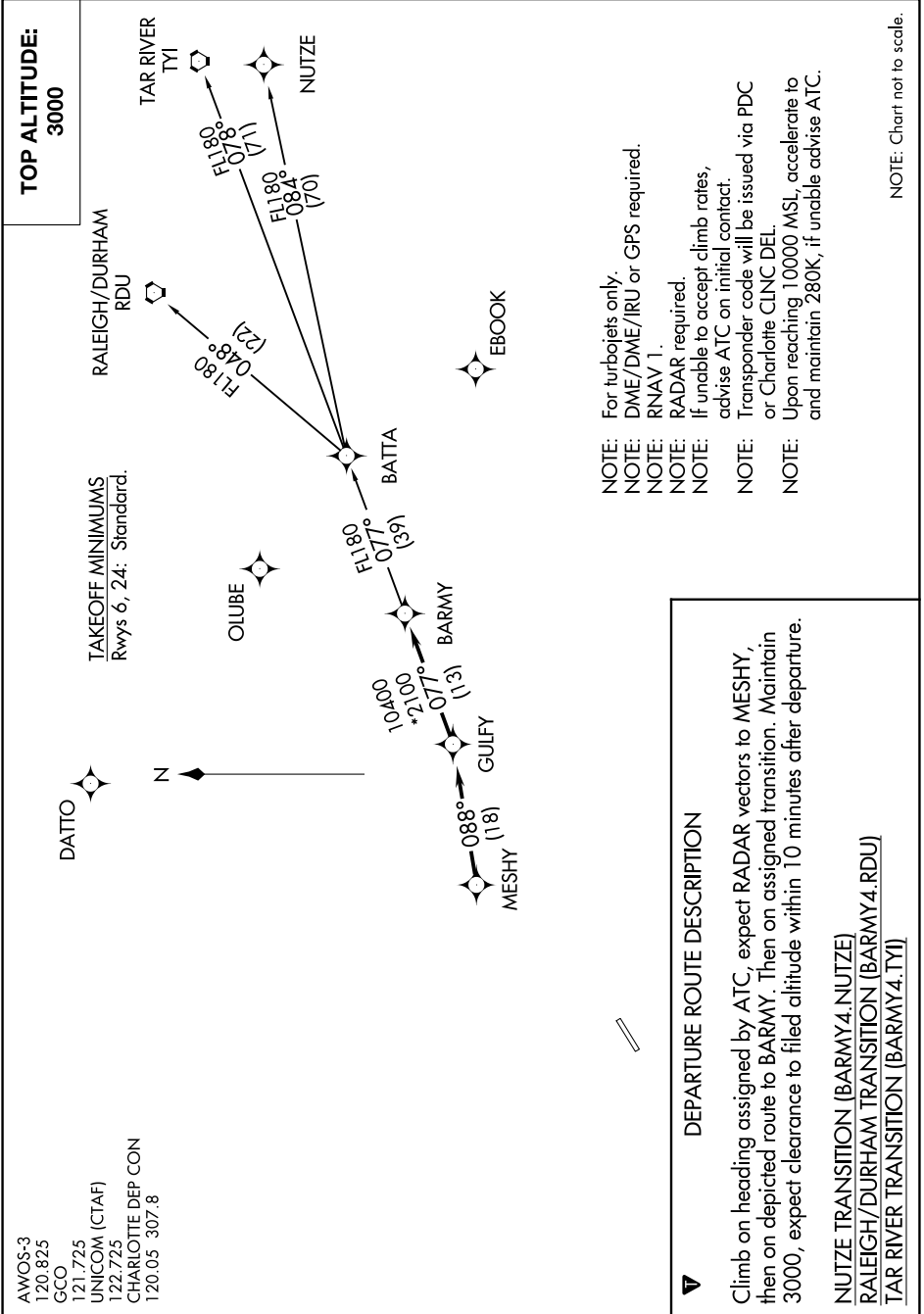


# BARMY FOUR DEPARTURE (RNAV)

SE-2, 16 JUN 2022 to 14 JUL 2022



AWOS-3  
120.825  
GCO  
121.725  
UNICOM (CTAF)  
122.725  
CHARLOTTE DEP CON  
120.05 307.8

TAKEOFF MINIMUMS  
Rwys 6, 24: Standard.

TOP ALTITUDE:  
3000

### DEPARTURE ROUTE DESCRIPTION

Climb on heading assigned by ATC, expect RADAR vectors to MESHY, then on depicted route to BARMY. Then on assigned transition. Maintain 3000, expect clearance to filed altitude within 10 minutes after departure.

NUTZE TRANSITION (BARMY4.NUTZE)  
 RALEIGH/DURHAM TRANSITION (BARMY4.RDU)  
 TAR RIVER TRANSITION (BARMY4.TYI)

- NOTE: For turbojets only.
- NOTE: DME/DME/IRU or GPS required.
- NOTE: RNAV 1.
- NOTE: RADAR required.
- NOTE: If unable to accept climb rates, advise ATC on initial contact.
- NOTE: Transponder code will be issued via PDC or Charlotte CLNC DEL.
- NOTE: Upon reaching 10000 MSL, accelerate to and maintain 280K, if unable advise ATC.

NOTE: Chart not to scale.

SE-2, 16 JUN 2022 to 14 JUL 2022

# BARMY FOUR DEPARTURE (RNAV)