

WAAS CH 42900 W33A	APP CRS 333°	Rwy Idg TDZE Apt Elev	6001 82 82
--	------------------------	-----------------------------	---------------------------------------

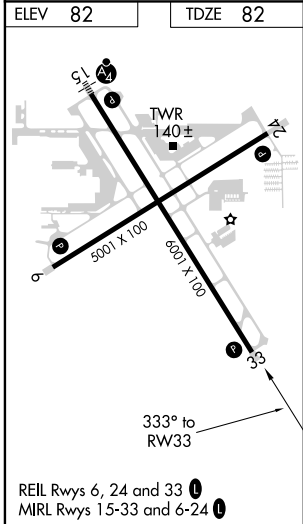
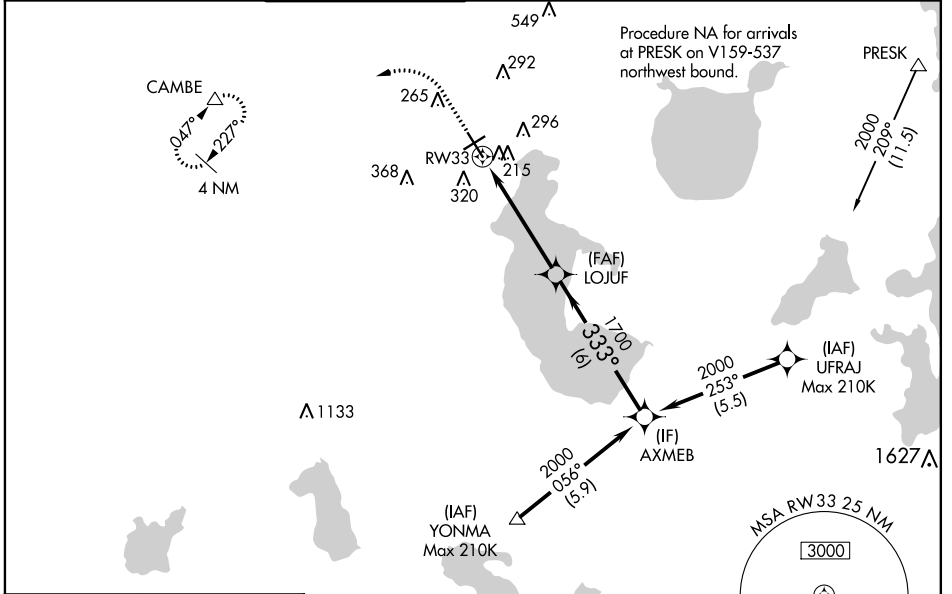
RNAV (GPS) RWY 33

KISSIMMEE GATEWAY (ISM)

⚠ Baro-VNAV NA when using Orlando Intl altimeter setting. For uncompensated Baro-VNAV systems, LNAV/VNAV NA below -15°C (5°F) or above 43°C (109°F). Helicopter visibility reduction below 3/4 SM NA. DME/DME RNP-0.3 NA. When local altimeter setting not received, use Orlando Intl altimeter setting and increase all LPV DA to 359, all LNAV/VNAV DA to 429, and all MDA 40 feet; increase LNAV/VNAV all Cats visibility 1/8 SM, LNAV Cat C/D and Circling Cat C visibility 1/4 SM.

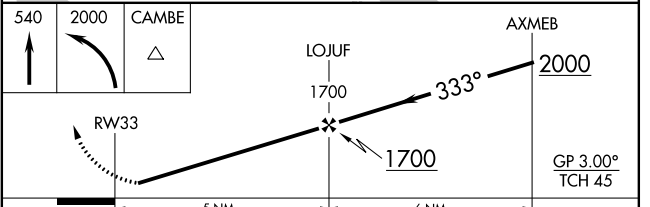
MISSED APPROACH: Climb to 540 then climbing left turn to 2000 direct CAMBE and hold.

ATIS 128.775	ORLANDO APP CON 119.4 351.9	KISSIMMEE TOWER * 124.45 (CTAF) 0	CLNC DEL 121.7	CLNC DEL 123.95 (when twr closed)	GND CON 121.7	UNICOM 122.95
------------------------	---------------------------------------	--	--------------------------	--	-------------------------	-------------------------



ELEV 82 TDZE 82

Procedure NA for arrivals at YONMA on V441 westbound.



CATEGORY	A	B	C	D
LPV DA		332-1	250 (300-1)	
LNAV/VNAV DA		402-1	320 (400-1)	
LNAV MDA	480-1	398 (400-1)	480-1 1/8	398 (400-1 1/8)
CIRCLING	620-1	538 (600-1)	680-1 1/2	700-2
			598 (600-1 1/2)	618 (700-2)

SE-3, 16 JUN 2022 to 14 JUL 2022

SE-3, 16 JUN 2022 to 14 JUL 2022