

LOC/DME I-ISM 109.75 Chan 34 (Y)	APP CRS 153°	Rwy Idg TDZE Apt Elev	6001 82 82
------------------------------------------------------	------------------------	-----------------------------	---------------------------------------

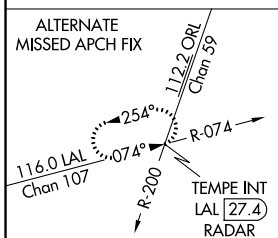
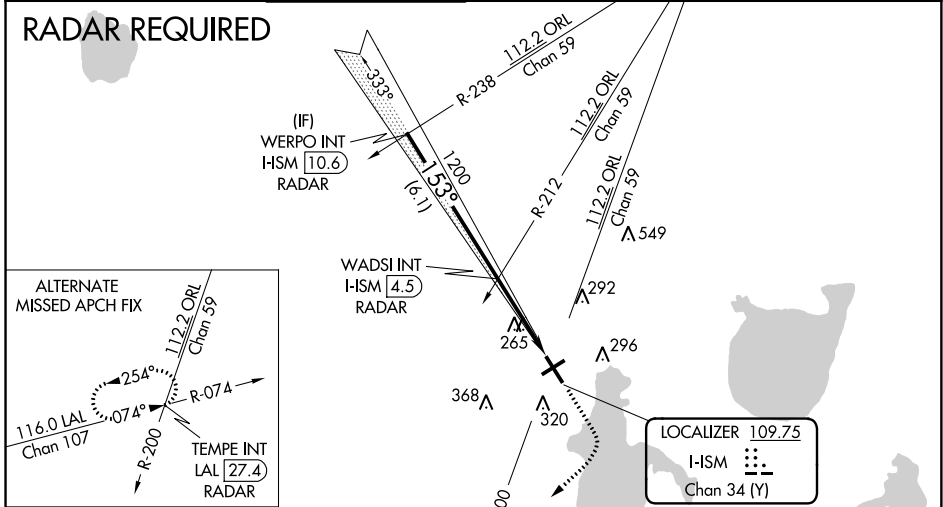
ILS or LOC RWY 15

KISSIMMEE GATEWAY (ISM)

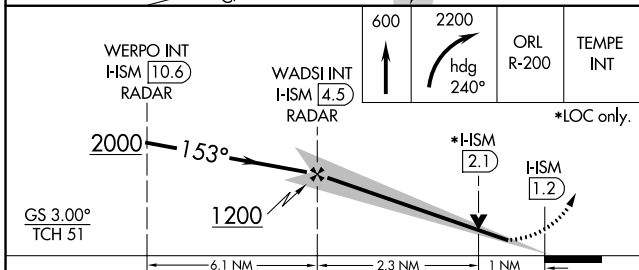
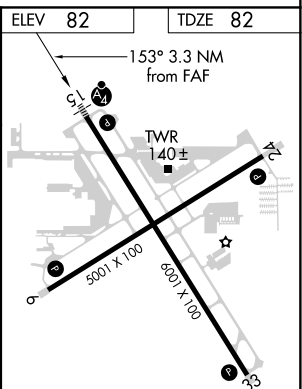
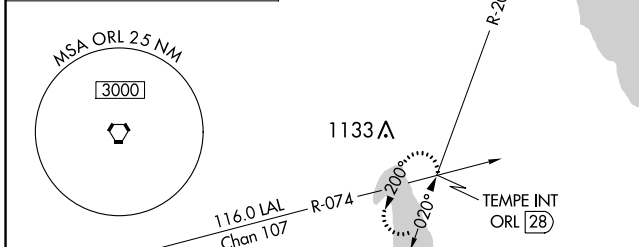
VDP NA with Orlando Intl altimeter setting. When local altimeter setting not received, use Orlando Intl altimeter setting and increase all DA to 309 feet, and all MDA 40 feet; increase Circling Cat C visibility 1/2 SM.	MALSF 	MISSED APPROACH: Climb to 600 then climbing right turn to 2200 on heading 240° and ORL VORTAC R-200 to TEMPE INT/ORL 28 DME and hold.

ATIS 128.775	ORLANDO APP CON 119.4 351.9	KISSIMMEE TOWER * 124.45 (CTAF)	CLNC DEL 121.7	CLNC DEL 123.95 (when twr closed)	GND CON 121.7	UNICOM 122.95
------------------------	---------------------------------------	-------------------------------------------	--------------------------	------------------------------------------------	-------------------------	-------------------------

RADAR REQUIRED



LOCALIZER 109.75
I-ISM
Chan 34 (Y)



CATEGORY	A	B	C	D
S-ILS 15	282-3/4 200 (200-3/4)			
S-LOC 15	440-3/4 358 (400-3/4)		440-1/4 358 (400-1/4)	
CIRCLING	680-1 598 (600-1)		680-1 1/2 700-2 598 (600-1 1/2) 618 (700-2)	

ELEV 82	TDZE 82
153° 3.3 NM from FAF	
TWR 140±	
500' X 100'	
800' X 100'	
33	
REIL Rwy 6, 24 and 33	
MIRL Rwy 15-33 and 6-24	
FAF to MAP 3.3 NM	
Knots	60 90 120 150 180
Min:Sec	3:18 2:12 1:39 1:19 1:06

SE-3, 16 JUN 2022 to 14 JUL 2022

SE-3, 16 JUN 2022 to 14 JUL 2022