

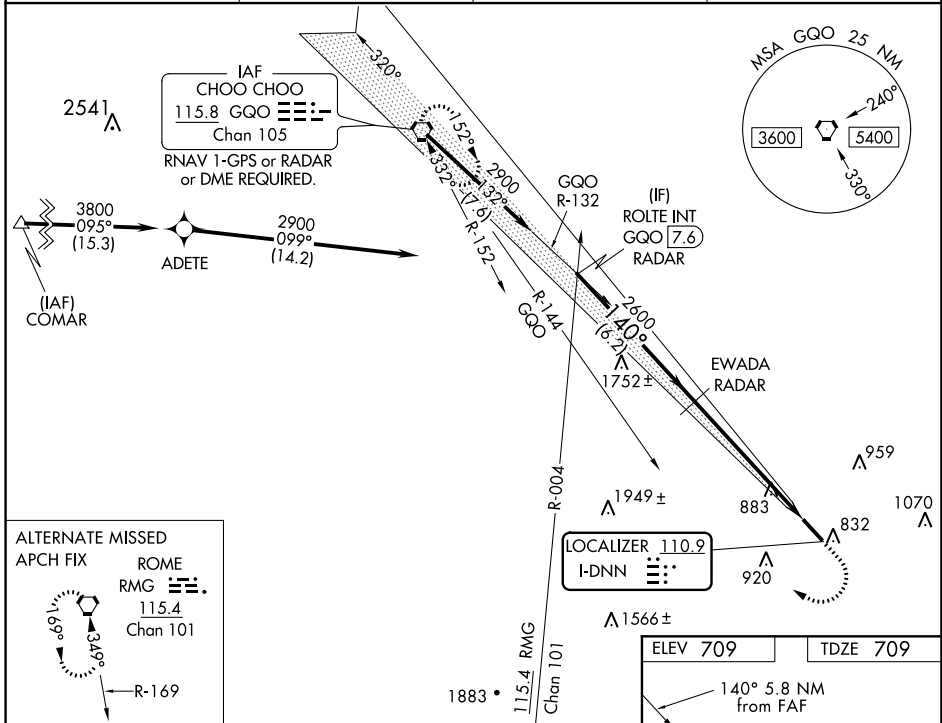
LOC I-DNN 110.9	APP CRS 140°	Rwy Idg TDZE Apt Elev	5496 709 709
---------------------------	------------------------	-----------------------------	---

ILS or LOC RWY 14

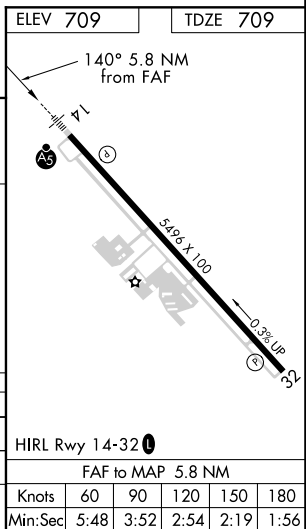
DALTON MUNI (DNN)

RADAR required to define EWADA. From COMAR: RNAV 1-GPS required.		MALSR	MISSED APPROACH: Climb to 1700 then climbing right turn to 3100 on heading 300° and GGO VORTAC R-144 to GGO VORTAC and hold.
<p>Autopilot coupled approach NA below 1200 MSL. Circling Rwy 32 NA at night. DME from GGO VORTAC. Simultaneous reception of I-DNN and GGO DME required. Rwy 14 helicopter visibility reduction below 3/4 SM NA. Inop table does not apply to S-ILS 14. For inop ALS, increase S-LOC 14 Cat A/B visibility to 1 SM and Cat C/D to 1/2 SM.</p>			

AWOS-3PT 127.65	CHATTANOOGA APP CON ★ 125.1 379.1	CLNC DEL 120.25	UNICOM 122.975 (CTAF) 0
---------------------------	---	---------------------------	-----------------------------------



VGSi and ILS glidepath not coincident (VGSi Angle 3.00/TCH 55).			
<p>ROLTE INT GGO [7.6] RADAR</p> <p>2900 → 140°</p> <p>GS 3.00° TCH 50</p> <p>6.2 NM</p>		<p>EWADA RADAR</p> <p>2600</p> <p>5.8 NM</p>	
1700	3100	GGO R-144	GGO
↑		hdg 300°	
CATEGORY	A	B	C
S-ILS 14	959-3/4 250 (300-3/4)		
S-LOC 14	1320-3/4	611 (700-3/4)	1320-1 3/8 611 (700-1 3/8)
CIRCLING	1320-1	611 (700-1)	1320-1 3/4 1420-2 1/4 611 (700-1 3/4) 711 (800-2 1/4)



SE-4, 16 JUN 2022 to 14 JUL 2022

SE-4, 16 JUN 2022 to 14 JUL 2022