

VORTAC ISO 109.6 Chan 33	APP CRS 290°	Rwy Idg TDZE Apt Elev	N/A N/A 133
--	------------------------	-----------------------------	--

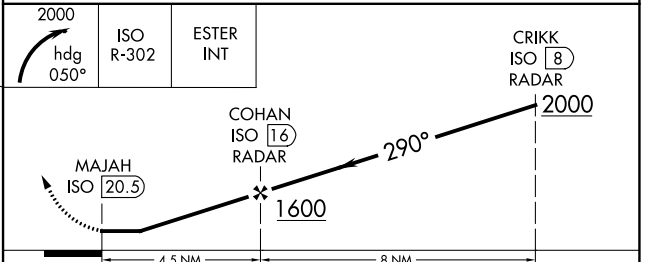
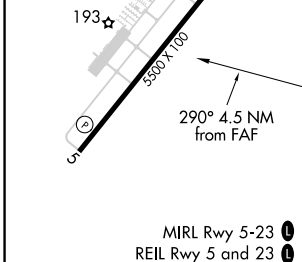
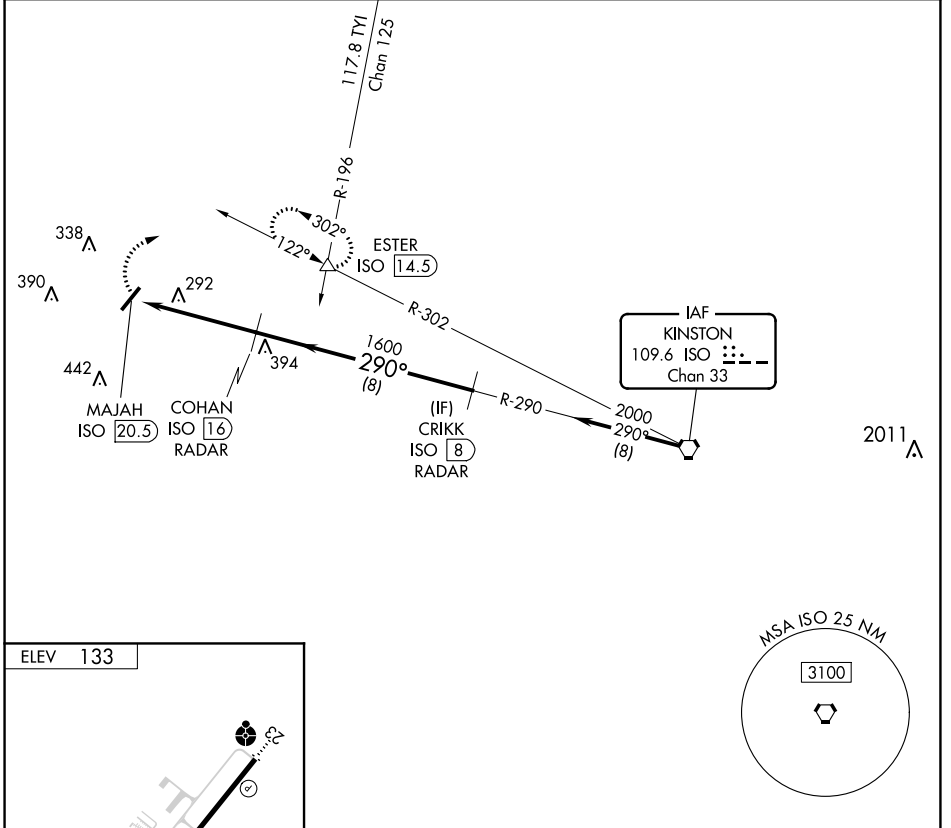
VOR-A

WAYNE EXEC JETPORT (GWW)

⚠ When local altimeter setting not received, use Smithfield altimeter setting and increase all MDAs 60 feet. DME or RADAR required.

MISSED APPROACH: Climbing right turn to 2000 on heading 050° and ISO VORTAC R-302 to ESTER INT/ISO 14.5 DME and hold.

AWOS-3P 118.975	SEYMOUR JOHNSON APP CON * 121.175 290.9	UNICOM 122.975 (CTAF) 0
---------------------------	---	-----------------------------------



FAF to MAP 4.5 NM					
Knots	60	90	120	150	180
Min:Sec	4:30	3:00	2:15	1:48	1:30
CATEGORY	A		B		C
CIRCLING	620-1 487 (500-1)		640-1¼ 507 (600-1¼)		760-2 627 (700-1¼)

VOR-A

SE-2, 16 JUN 2022 to 14 JUL 2022

SE-2, 16 JUN 2022 to 14 JUL 2022