

LOC I-UGZ <b>111.9</b>	APP CRS <b>227°</b>	Rwy Idg TDZE Apt Elev	<b>5000</b> <b>133</b> <b>133</b>
---------------------------	------------------------	-----------------------------	---

# ILS or LOC RWY 23

WAYNE EXEC JETPORT (GWW)

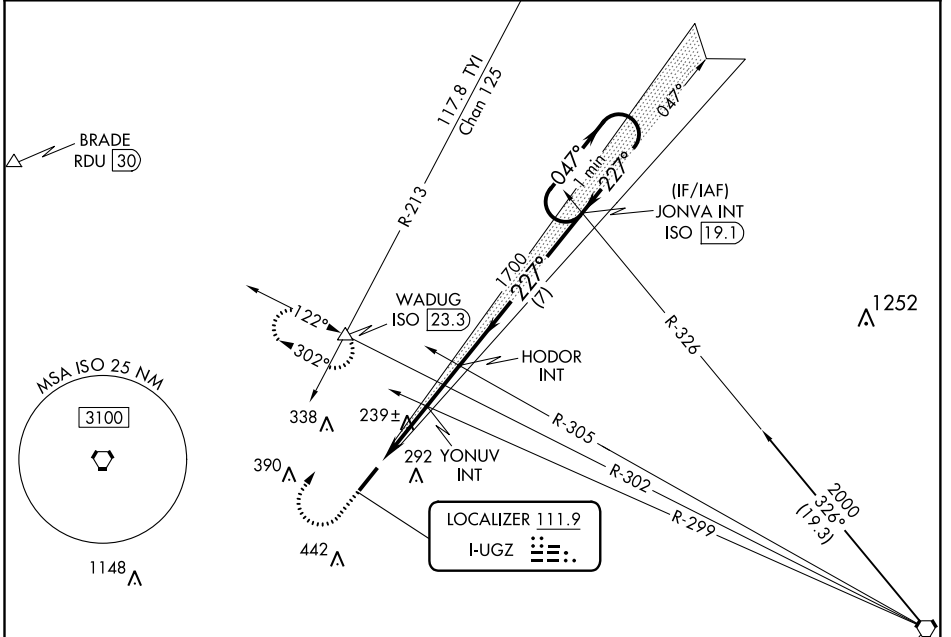
**⚠** When local altimeter setting not received, use Smithfield altimeter setting and increase DA to 387 feet and all MDA 60 feet, increase S-LOC 23 Cats C/D visibility 1/8 SM, Circling Cats C/D 1/4 SM. Inop table does not apply to S-ILS 23.

ODALS



**MISSED APPROACH:** Climb to 900 then climbing right turn to 2000 on heading 040° and ISO VORTAC R-302 to WADUG INT/ISO 23.3 DME and hold.

AWOS-3P <b>118.975</b>	SEYMOUR JOHNSON APP CON ★ <b>121.175 290.9</b>	UNICOM <b>122.975 (CTAF) 0</b>
---------------------------	---	-----------------------------------



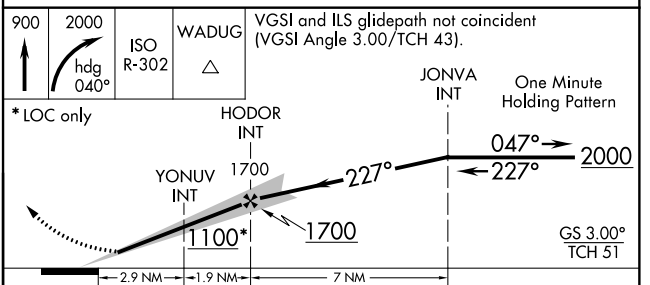
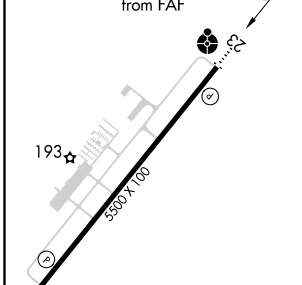
SE-2, 16 JUN 2022 to 14 JUL 2022

SE-2, 16 JUN 2022 to 14 JUL 2022

ELEV 133	TDZE 133
----------	----------

## DME or RADAR REQUIRED

KINSTON  
109.6 ISO ---  
Chan 33



CATEGORY	A	B	C	D
S-ILS 23	333-3/4 200 (200-3/4)			
S-LOC 23	500-3/4	367 (400-3/4)	500-1	367 (400-1)
CIRCLING	580-1 447 (500-1)	640-1 507 (600-1)	760-1 3/4 627 (700-1 3/4)	760-2 627 (700-2)

GOLDSBORO, NORTH CAROLINA  
Amdt 2C 17JUN21

35°28'N-77°58'W

# WAYNE EXEC JETPORT (GWW)

## ILS or LOC RWY 23