

WAAS CH 72732 W22A	APP CRS 217°	Rwy Idg TDZE Apt Elev	6497 869 869
--	------------------------	-----------------------------	---

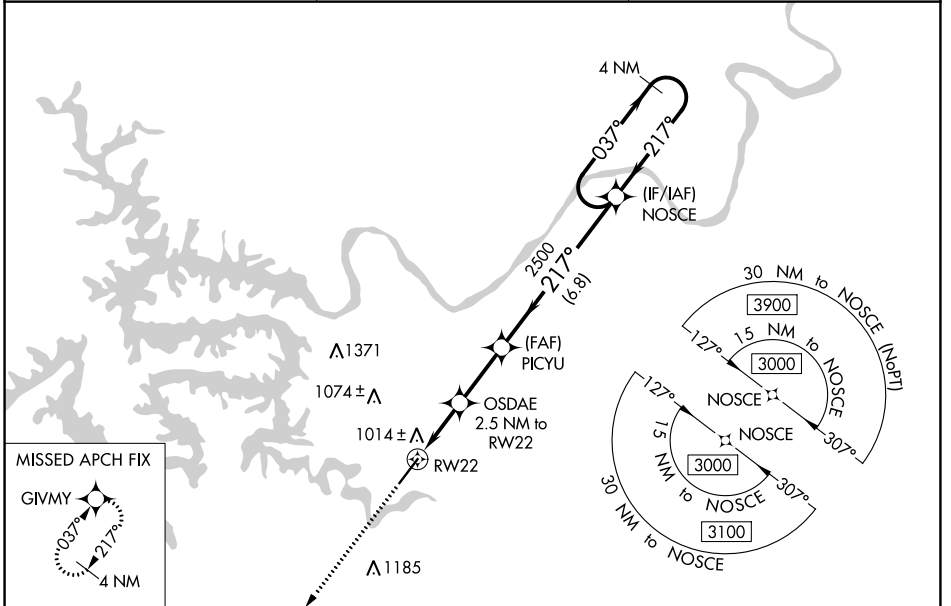
RNAV (GPS) RWY 22

LEE C FINE MEML (AIZ)

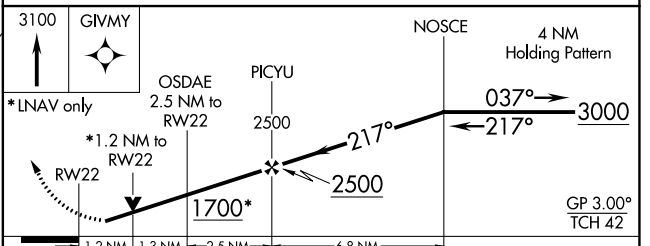
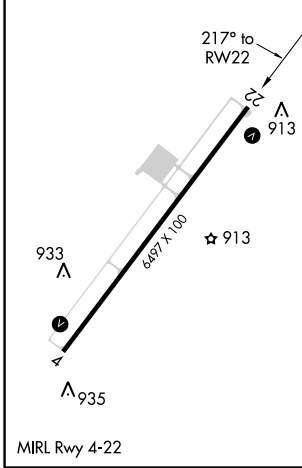
⚠ For uncompensated Baro-VNAV systems, LNAV/VNAV NA below -16°C or above 54°C.
⚠ DME/DME RNP-0.3 NA. Helicopter visibility reduction below 1 SM NA. When local altimeter setting not received, use Camdenton altimeter setting and increase all DAs 50 feet and all MDAs 60 feet, increase LNAV/VNAV all Cats visibility 1/8 SM and LNAV Cat C and Circling Cat C 1/4 SM. Baro-VNAV and VDP NA with Camdenton altimeter setting.

MISSED APPROACH: Climb to 3100 direct GIVMY and hold.

AWOS-3PT 135.325	MIZZU APP CON 124.1 353.925	UNICOM 122.8 (CTAF)
----------------------------	---------------------------------------	-------------------------------



ELEV 869	TDZE 869
----------	----------



CATEGORY	A	B	C	D
LPV DA	1119-1	250 (300-1)		NA
LNAV/VNAV DA	1164-1	295 (300-1)		NA
LNAV MDA	1280-1	411 (500-1)	1280-1 1/8 411 (500-1 1/8)	NA
CIRCLING	1320-1 451 (500-1)	1380-1 511 (600-1)	1440-1 1/2 571 (600-1 1/2)	NA

NC-3, 16 JUN 2022 to 14 JUL 2022

NC-3, 16 JUN 2022 to 14 JUL 2022