

(ZETTR3.ZETTR) 19339

# ZETTR THREE DEPARTURE (RNAV)

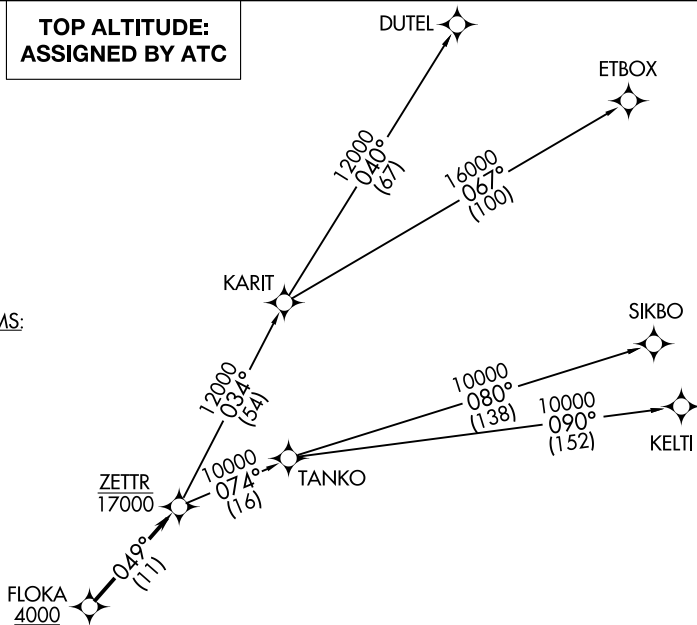
AL-5642 (FAA)

CLUSTER (TTF)  
MONROE, MICHIGAN

AWOS-3  
119.075  
CTAF  
122.7  
DETROIT DEP CON  
134.3 284.0

**TOP ALTITUDE:  
ASSIGNED BY ATC**

TAKEOFF MINIMUMS:  
Standard.



- NOTE: RNAV 1.
- NOTE: RADAR required.
- NOTE: DME/DME/IRU or GPS required.
- NOTE: Turbojet departures at/above 10000, maintain 280K until advised by ATC.
- NOTE: TANKO TRANSITION: For use by CYYZ area arrivals only, or as assigned by ATC.

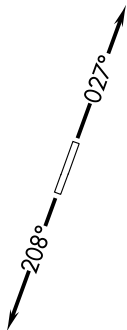
### ▼ DEPARTURE ROUTE DESCRIPTION

TAKEOFF RUNWAY 3: Climb on heading 027° or as assigned for RADAR vectors to cross FLOKA at or above 4000, thence....

TAKEOFF RUNWAY 21: Climb on heading 208° or as assigned for RADAR vectors to cross FLOKA at or above 4000, thence....

....on track 049° to cross ZETTR at or below 17000, then on (transition). Maintain ATC assigned altitude, expect filed altitude 10 minutes after departure.

- DUTEL TRANSITION (ZETTR3.DUTEL):
- ETBOX TRANSITION (ZETTR3.ETBOX):
- KELTI TRANSITION (ZETTR3.KELTI):
- SIKBO TRANSITION (ZETTR3.SIKBO):
- TANKO TRANSITION (ZETTR3.TANKO):



NOTE: Chart not to scale.

ZETTR THREE DEPARTURE (RNAV)  
(ZETTR3.ZETTR) 05DEC19

MONROE, MICHIGAN  
CLUSTER (TTF)

EC-1, 16 JUN 2022 to 14 JUL 2022

EC-1, 16 JUN 2022 to 14 JUL 2022