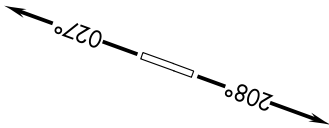


EC-1, 16 JUN 2022 to 14 JUL 2022

**TOP ALTITUDE:
ASSIGNED BY ATC**

AWOS-3
119.075
CTAF
122.7
DETROIT DEP CON
134.3 284.0



TAKEOFF MINIMUMS:
Standard.

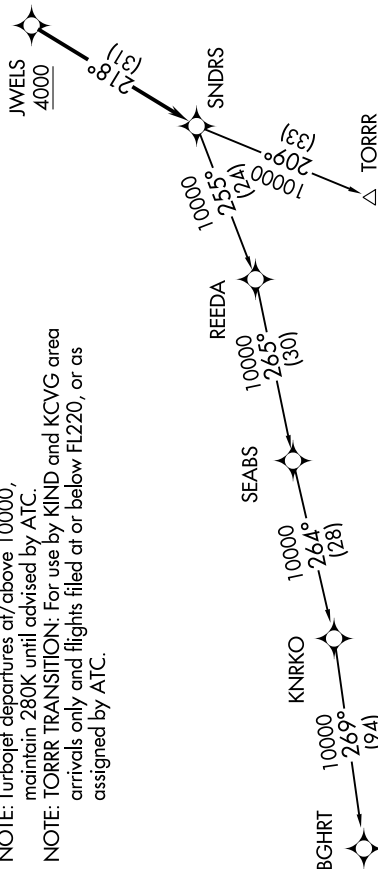
NOTE: Chart not to scale.

DEPARTURE ROUTE DESCRIPTION

TAKEOFF RUNWAY 3: Climb on heading 027° or as assigned for RADAR vectors to cross JWELS at or above 4000, thence....
TAKEOFF RUNWAY 21: Climb on heading 208° or as assigned for RADAR vectors to cross JWELS at or above 4000, thence....
...on track 218° to SNDRS, then on (transition). Maintain ATC assigned altitude, expect filed altitude 10 minutes after departure.

BGHR TRANSITION (SNDRS2.BGHR):
TORR TRANSITION (SNDRS2.TORR):

- NOTE: RNAV 1.
- NOTE: RADAR required.
- NOTE: DME/DME/IRU or GPS required.
- NOTE: Turbojet departures at/above 10000, maintain 280K until advised by ATC.
- NOTE: TORR TRANSITION: For use by KIND and KCVG area arrivals only and flights filed at or below FL220, or as assigned by ATC.



EC-1, 16 JUN 2022 to 14 JUL 2022