

(BARI2.BARII) 19227

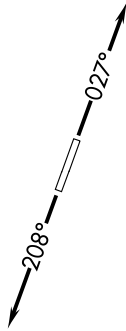
BARII TWO DEPARTURE (RNAV)

AL-5642 (FAA)

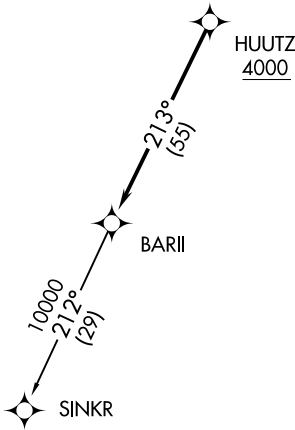
CUSTER (TTF)
MONROE, MICHIGAN

**TOP ALTITUDE:
ASSIGNED BY ATC**

AWOS-3
119.075
CTAF
122.7
DETROIT DEP CON
134.3 284.0



TAKEOFF MINIMUMS:
Standard.



NOTE: RNAV 1.
NOTE: RADAR required.
NOTE: DME/DME/IRU or GPS required.
NOTE: Turbojet departures at/above 10000, maintain 280K until advised by ATC.

NOTE: Chart not to scale.

DEPARTURE ROUTE DESCRIPTION

TAKEOFF RUNWAY 3: Climb on heading 027° or as assigned for RADAR vectors to cross HUUTZ at or above 4000, thence....

TAKEOFF RUNWAY 21: Climb on heading 208° or as assigned for RADAR vectors to cross HUUTZ at or above 4000, thence....

....on track 213° to BARII, then on (transition). Maintain ATC assigned altitude, expect filed altitude 10 minutes after departure.

SINKR TRANSITION (BARI2.SINKR):

BARII TWO DEPARTURE (RNAV)
(BARI2.BARII) 15AUG19

MONROE, MICHIGAN
CUSTER (TTF)

EC-1, 16 JUN 2022 to 14 JUL 2022

EC-1, 16 JUN 2022 to 14 JUL 2022