

(CONLE4.CONLE) 21112

AL-5596 (FAA)

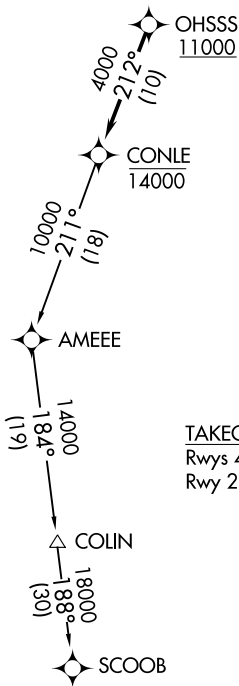
EASTON/NEWNAM FLD (E5N)
EASTON, MARYLAND

CONLE FOUR DEPARTURE (RNAV)

ATIS
124.475
CLNC DEL
119.075
GND CON
119.075
EASTON TOWER ★
118.525 (CTAF)
POTOMAC DEP CON
124.55 317.425

NOTE: RNAV 1.
NOTE: DME/DME/IRU or GPS required.
NOTE: RADAR required.
NOTE: For turbojet aircraft only.

**TOP ALTITUDE:
ASSIGNED BY ATC**



TAKEOFF MINIMUMS:
Rwys 4, 15, 33: Standard.
Rwy 22: 300-2 or standard with minimum climb
of 245' per NM to 500.

NOTE: Chart not to scale.



DEPARTURE ROUTE DESCRIPTION

Climb on assigned heading to ATC assigned altitude, for vectors to cross OHSSS at or above 11000, then on track 212° to cross CONLE at or below 14000, then on assigned transition. Expect filed altitude within 10 minutes after departure.

COLIN TRANSITION (CONLE4.COLIN)

SCOOB TRANSITION (CONLE4.SCOOB)

CONLE FOUR DEPARTURE (RNAV)
(CONLE4.CONLE) 31DEC20

EASTON, MARYLAND
EASTON/NEWNAM FLD (E5N)

NE-3, 16 JUN 2022 to 14 JUL 2022

NE-3, 16 JUN 2022 to 14 JUL 2022