

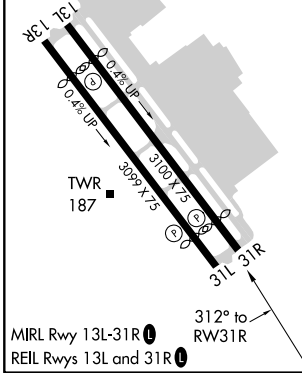
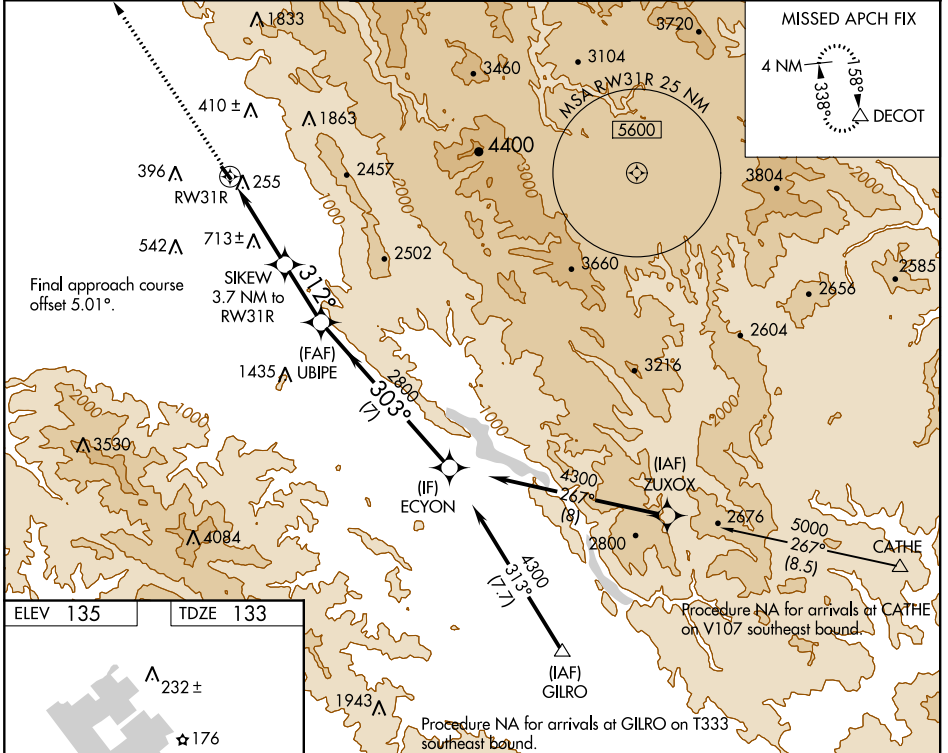
APP CRS 312°	Rwy Idg 2690
	TDZE 133
	Apt Elev 135

RNAV (GPS) Y RWY 31R

REID-HILLVIEW OF SANTA CLARA COUNTY (R.H.V)

RNP APCH.	MISSED APPROACH: Climb to 4000 direct DECOF and hold.
<p>▼ NA</p> <p>Circle Rwy 31L NA at night. Rwy 31R helicopter visibility reduction below 3/4 SM NA. VDP NA when using Norman Y Mineta San Jose Intl altimeter setting. Circling east of Rwy 13L-31R NA at night. When control tower closed, use Norman Y Mineta San Jose Intl altimeter setting and increase all MDAs 40 feet.</p>	

ATIS 125.2	NORCAL APP CON 120.1 290.25	REID-HILLVIEW TOWER * (Rwy 13L-31R) (Rwy 13R-31L) 119.8 (CTAF) 126.1	GND CON 121.65	UNICOM 122.95
----------------------	---------------------------------------	---	--------------------------	-------------------------



4000 DECOF ↑ △	SIKEW 3.7 NM to RWY 31R		UBIPE		ECYON
	2.6 NM to RWY 31R	1.1 NM	2.5 NM	7 NM	4300
RWY 31R		312°		303°	
1760		2800		4300	
2.6 NM		1.1 NM		2.5 NM	
CATEGORY LNAV MDA CIRCLING	A 1300-1¼ 1167 (1200-1¼)	B 1300-1½ 1167 (1200-1½)	C NA	D NA	

SW-2, 16 JUN 2022 to 14 JUL 2022

SW-2, 16 JUN 2022 to 14 JUL 2022