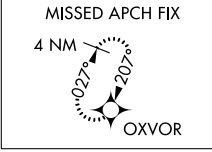
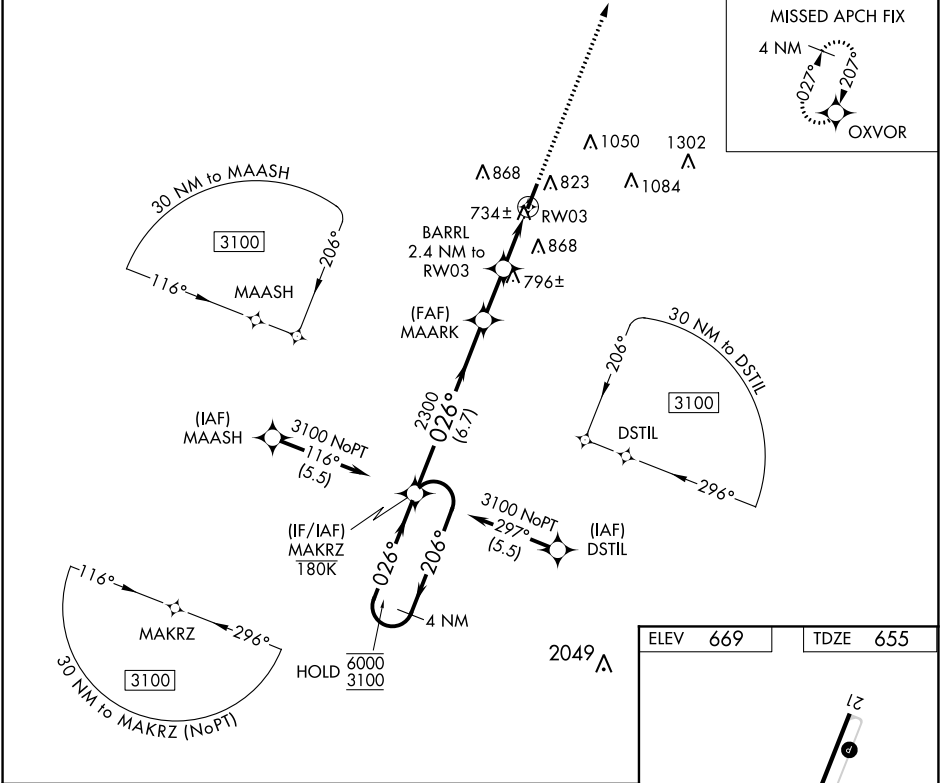


| | | |
|-------------|----------|-------------|
| APP CRS | Rwy Idg | 5003 |
| 026° | TDZE | 655 |
| | Apt Elev | 669 |

RNAV (GPS) RWY 3

SAMUELS FLD (BRY)

| | | |
|--|--|---|
| RNP APCH. | | MISSED APPROACH: Climb to 3000 direct OXVOR and hold. |
| Rwy 3 helicopter visibility reduction below 3/4 SM NA. | | |
| AWOS-3 119.925 | LOUISVILLE APP CON 132.075 327.0 | UNICOM 122.8 (CTAF) 0 |



SE-1, 16 JUN 2022 to 14 JUL 2022

SE-1, 16 JUN 2022 to 14 JUL 2022

| | | | | |
|----------------------|-----------------------|-----------------------|-----------------------|-------------------------------|
| 4 NM Holding Pattern | MAKRZ | MAARK | BARRL 2.4 NM to RW03 | 3000 OXVOR |
| 6000 ← 206° | 3100 → 026° | 2300 | 1560 | |
| ← 6.7 NM | | ← 2 NM | ← 1.5 NM | ← 0.9 NM |
| CATEGORY | A | B | C | D |
| LNVA MDA | 1000-1 345 (400-1) | | | |
| CIRCLING | 1200-1 531 (600-1) | 1260-1 591 (600-1) | 1360-2 691 (700-2) | 1480-2 3/4 811 (900-2 3/4) |

