

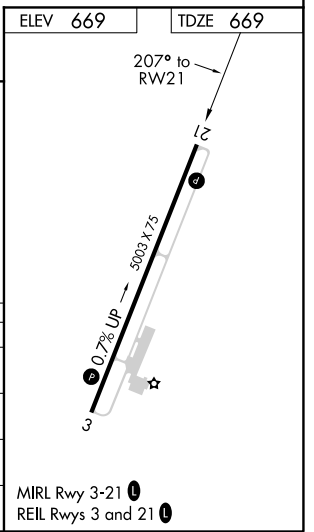
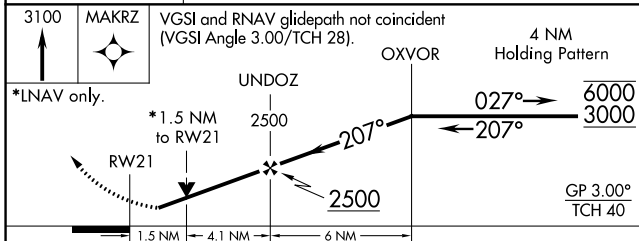
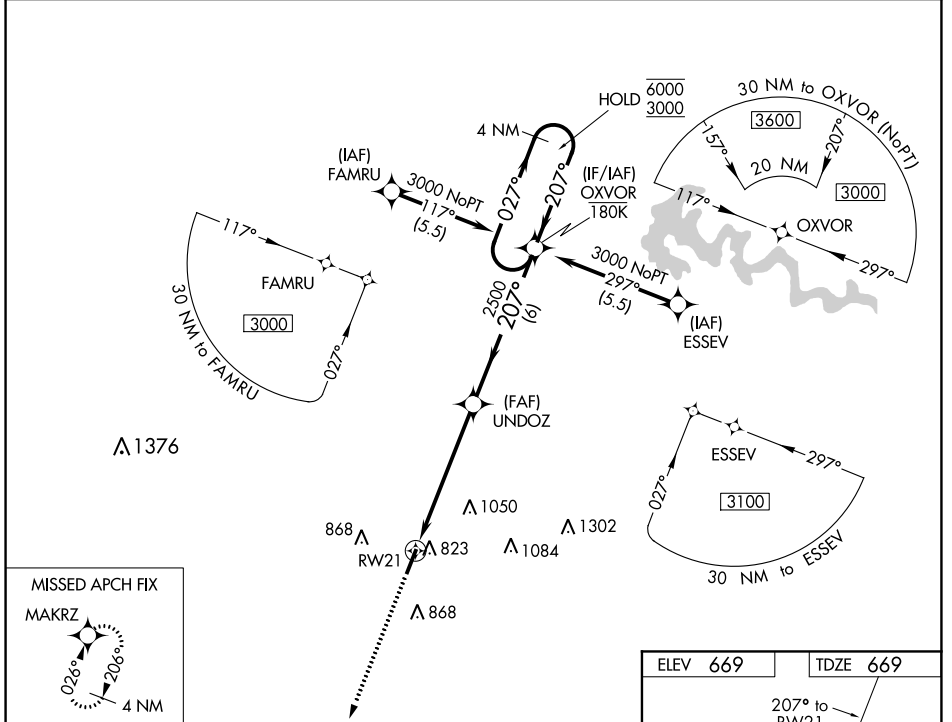
WAAS CH 77816 W21A	APP CRS 207°	Rwy Idg TDZE Apt Elev	5003 669 669
--	------------------------	-----------------------------	---

RNAV (GPS) RWY 21

SAMUELS FLD (BRY)

RNP APCH.	MISSED APPROACH: Climb to 3100 direct MAKRZ and hold.
<p>▼ Rwy 21 helicopter visibility reduction below 3/4 SM NA. ▲ For uncompensated Baro-VNAV systems, LNAV/VNAV NA below -16°C or above 54°C.</p>	

AWOS-3 119.925	LOUISVILLE APP CON 132.075 327.0	UNICOM 122.8 (CTAF) 0
--------------------------	--	---------------------------------



CATEGORY	A	B	C	D
LPV DA	919-3/4		250 (300-3/4)	
LNAV/VNAV DA	1051-1 1/8		382 (400-1 1/8)	
LNAV MDA	1180-1 511 (600-1)		1180-1 3/8 511 (600-1 1/8)	
C CIRCLING	1200-1 531 (600-1)	1260-1 591 (600-1)	1360-2 691 (700-2)	1480-2 3/4 811 (900-2 3/4)

SE-1, 16 JUN 2022 to 14 JUL 2022

SE-1, 16 JUN 2022 to 14 JUL 2022