

AL-5535 (FAA)

RNAV (GPS) RWY 21

GRAHAM MUNI (RPH)

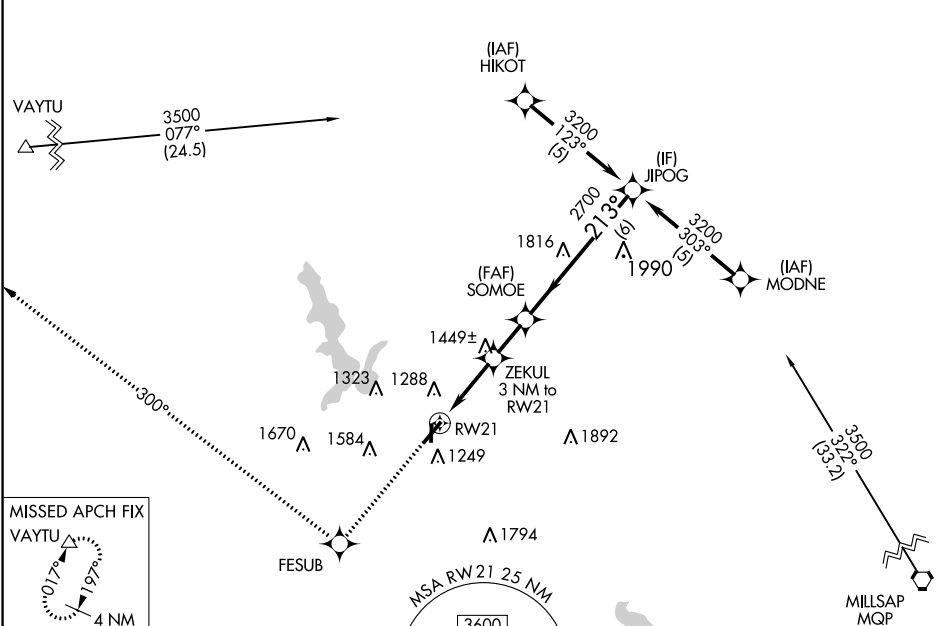
APP CRS	Rwy Idg	5000
213°	TDZE	1114
	Apt Elev	1123

RNP APCH.

- ▼ When local altimeter setting not received, use Mineral Wells altimeter setting and increase all
- ▲ MDAs 100 feet. Rwy 21 helicopter visibility reduction below 1 SM NA. Procedure NA at night.

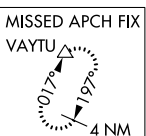
MISSED APPROACH:
Climb to 3900 direct FESUB and via 300° track to VAYTU and hold.

AWOS-3P 118.025	FORT WORTH CENTER 127.0 360.6	UNICOM 122.975 (CTAF) 0
---------------------------	---	-----------------------------------

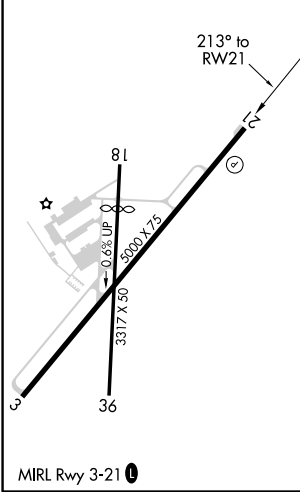


SC-2, 16 JUN 2022 to 14 JUL 2022

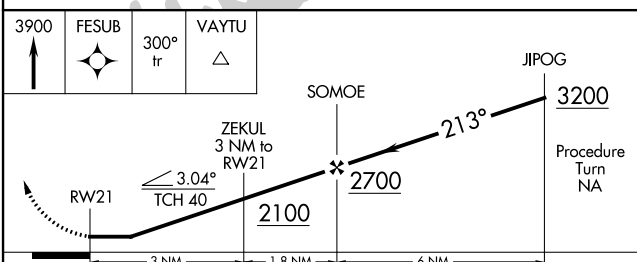
SC-2, 16 JUN 2022 to 14 JUL 2022



ELEV 1123	TDZE 1114
-----------	-----------



Procedure NA for arrivals on MQP VORTAC via airway radials 265 CW 001.



CATEGORY	A	B	C	D
LNAV MDA	1700-1	586 (600-1)	NA	
CIRCLING	1700-1	577 (600-1)	NA	