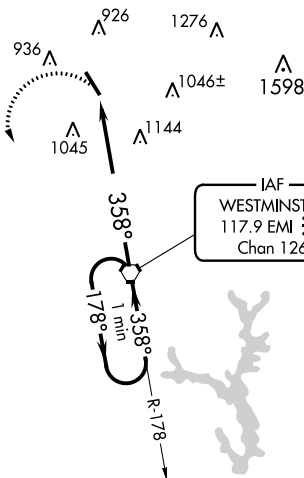
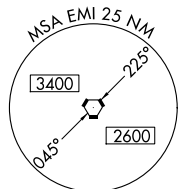


VORTAC EMI <b>117.9</b> Chan <b>126</b>	APP CRS <b>358°</b>	Rwy Idg TDZE Apt Elev	<b>5100</b> <b>788</b> <b>789</b>
---	------------------------	-----------------------------	---

# VOR RWY 34

CARROLL COUNTY RGNL/JACK B POAGE FLD (DMW)

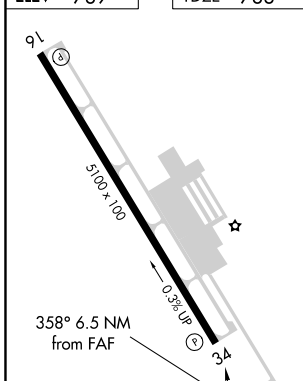
<b>NA</b>		MISSED APPROACH: Climbing left turn to 2900 direct EMI VORTAC and hold.	
AWOS-3 <b>121.25</b>	POTOMAC APP CON <b>125.525 291.625</b>	GCO <b>121.725</b>	UNICOM <b>122.7 (CTAF) 0</b>



NE-3, 16 JUN 2022 to 14 JUL 2022

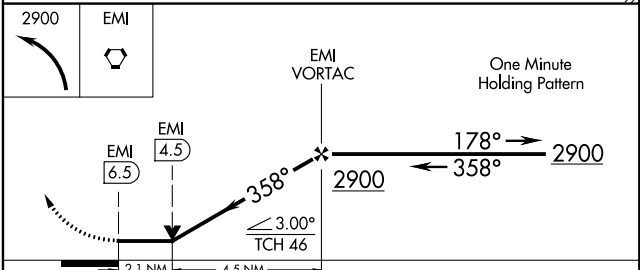
NE-3, 16 JUN 2022 to 14 JUL 2022

ELEV <b>789</b>	TDZE <b>788</b>
-----------------	-----------------



FAF to MAP 6.5 NM					
Knots	60	90	120	150	180
Min:Sec	6:30	4:20	3:15	2:36	2:10

WASHINGTON DC METROPOLITAN SFRA  
**WARNING -- WASHINGTON DC SFRA. CTC POTOMAC APP CON**



CATEGORY	A	B	C	D
S-34	1480-1	692 (700-1)	1480-2 692 (700-2)	NA
CIRCLING	1480-1	691 (700-1)	1500-2 711 (800-2)	NA

# VOR RWY 34