

WAAS CH 62824 W28A	APP CRS 282°	Rwy Idg TDZE 969 Apt Elev 974	5060
----------------------------------------	------------------------	---------------------------------------------------	-------------

RNAV (GPS) RWY 28

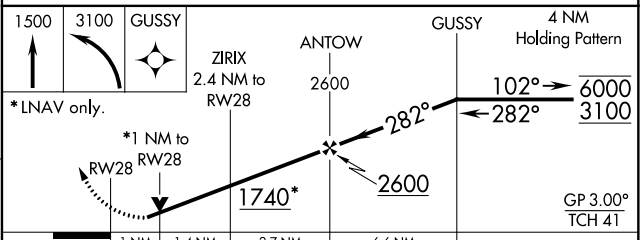
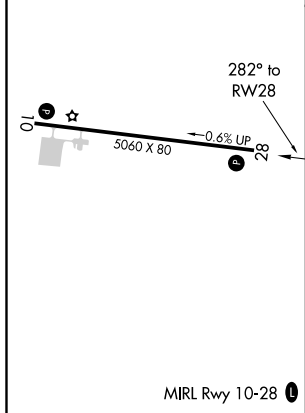
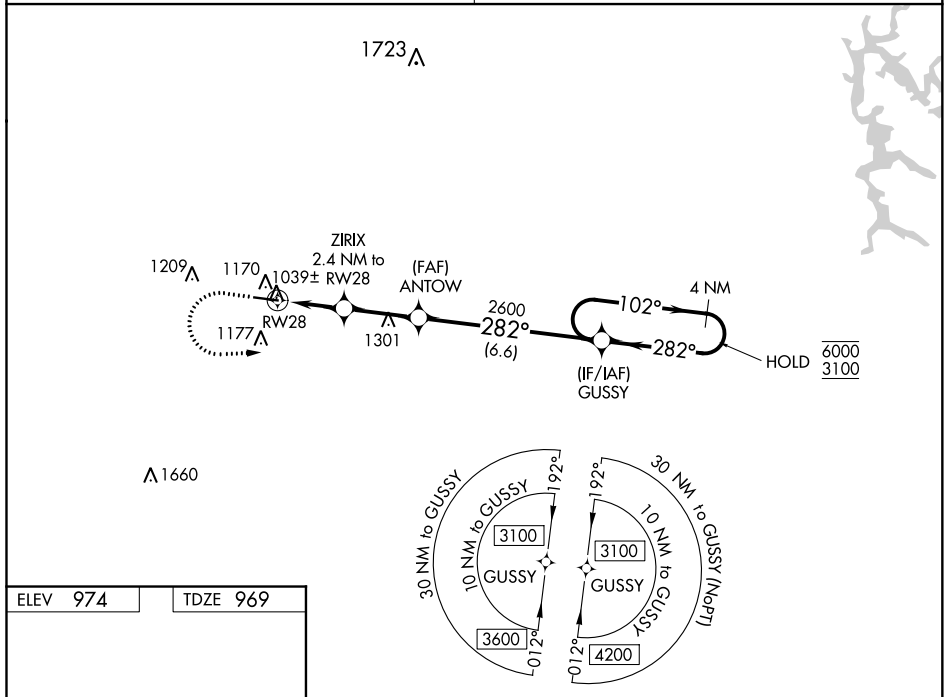
POLK COUNTY/CORNELIUS MOORE FLD (4A4)

RNP APCH.

NA Baro-VNAV and VDP NA when using Cartersville altimeter setting. Rwy 28 helicopter visibility reduction below $\frac{3}{4}$ SM NA. For uncompensated Baro-VNAV systems, LNAV/VNAV NA below -8°C or above 54°C. Obtain local altimeter setting on CTAF, when not received, use Cartersville altimeter setting: increase LPV DA to 1287 feet; increase LNAV/VNAV DA to 1353 feet and all visibility $\frac{1}{8}$ SM; increase all MDAs 80 feet and visibility Cuts C and D $\frac{1}{8}$ SM.

MISSED APPROACH: Climb to 1500 then climbing left turn to 3100 direct GUSSY and hold.

ATLANTA CENTER 124.5 270.325	UNICOM 122.8 (CTAF)
----------------------------------------	-------------------------------



	1 NM	1.4 NM	2.7 NM	6.6 NM	
CATEGORY	A	B	C	D	
LPV DA		1219-1	250 (300-1)		
LNAV/VNAV DA		1285-1	316 (400-1)		
LNAV MDA		1300-1	331 (400-1)		

SE-4, 16 JUN 2022 to 14 JUL 2022

SE-4, 16 JUN 2022 to 14 JUL 2022