


LOC/DME I-JJC 109.55 Chan 32 (Y)	APP CRS 005°	Rwy Idg 9801 TDZE 595 Apt Elev 629
--	------------------------	---

ILS or LOC RWY 36R

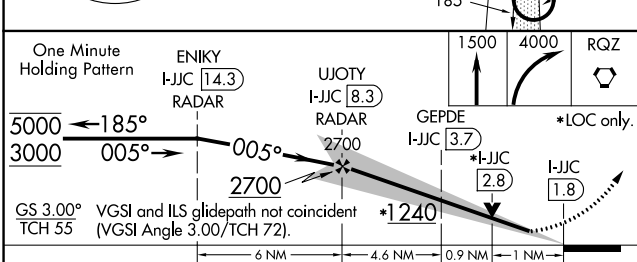
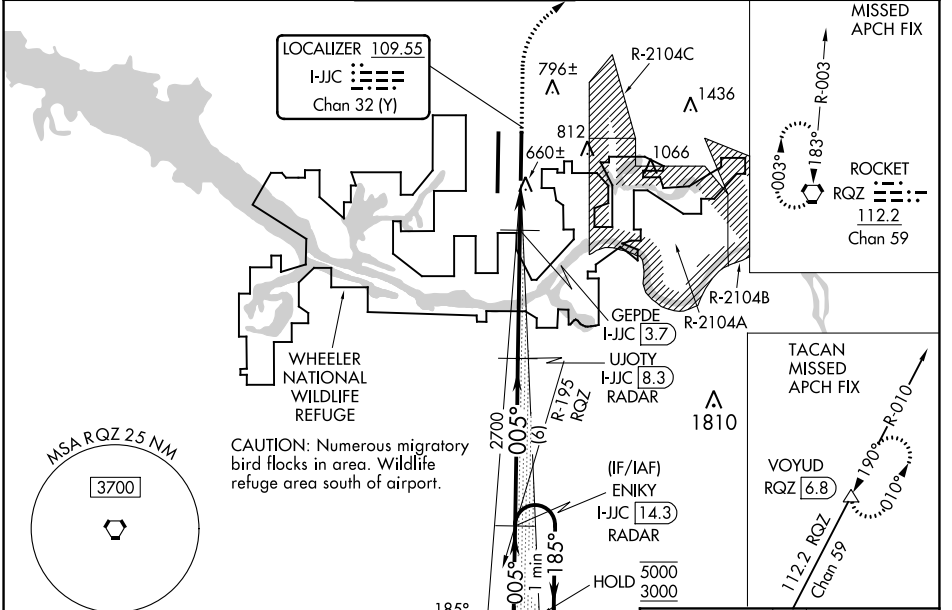
HUNTSVILLE INTL-CARL T JONES FLD (HSV)

RADAR required for procedure entry. DME or RADAR required for LOC only.

Simultaneous approach authorized. For inop ALS, increase S-ILS 36R Cat E visibility to RVR 4000 and S-LOC 36R Cat E to 1 $\frac{1}{8}$ SM.
 GEPDE FIX MINIMUMS: Increase S-LOC 36R Cat E visibility to RVR 6000. Circling NA for Cat C/D/E east of Rwy 18L-36R.

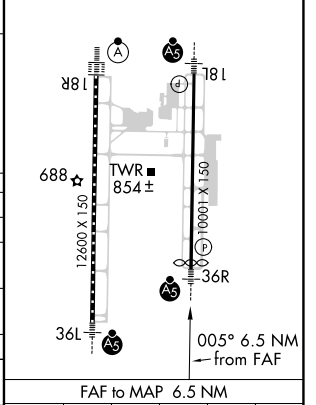
MALSRR
 MISSED APPROACH: Climb to 1500 then climbing right turn to 4000 direct RQZ VORTAC and hold. (TACAN aircraft climb to 5000 on RQZ VORTAC R-010 to VOYUD/RQZ 6.8 DME and hold north, left turn, 190° inbound).

ATIS 121.25	HUNTSVILLE APP CON * 125.6 354.1	HUNTSVILLE TOWER * 127.6 (CTAF) 350.35	GND CON 121.9 269.525	CLNC DEL 120.35	UNICOM 122.95
-----------------------	--	--	---------------------------------	---------------------------	-------------------------



ELEV 629	TDZE 595
----------	----------

TDZ/CL Rwys 18R and 36L
 HIRL Rwys 18L-36R and 18R-36L



CATEGORY	A	B	C	D	E
S-ILS 36R	818/24 223 (200- $\frac{1}{2}$)				
S-LOC 36R	1240/24	645 (700- $\frac{1}{2}$)	1240-1 $\frac{3}{8}$		645 (700-1 $\frac{3}{8}$)
CIRCLING	1240-1	611 (700-1)	1240-1 $\frac{7}{8}$	1240-2	1260-2 $\frac{1}{4}$
GEPDE FIX MINIMUMS					
S-LOC 36R	980/24	385 (400- $\frac{1}{2}$)	980/35		385 (400- $\frac{5}{8}$)
CIRCLING	1160-1	531 (600-1)	1160-1 $\frac{1}{2}$	1240-2	1260-2 $\frac{1}{4}$
			531 (600- $\frac{1}{2}$)	611 (700-2)	631 (700-2 $\frac{1}{4}$)

FAF to MAP 6.5 NM					
Knots	60	90	120	150	180
Min:Sec	6:30	4:20	3:15	2:36	2:10

SE-4, 16 JUN 2022 to 14 JUL 2022

SE-4, 16 JUN 2022 to 14 JUL 2022